

Getting Started Guide

Contents

What's new in this release?	1	Step 3: Create an administrator account	19
Introduction	3	Step 4: Configure disks	21
Before you get started checklist	5	Step 5: Install the Lotus Foundations Start add-on	23
Installation summary	7	Step 6: Create user accounts for Lotus Foundations Start	25
Steps 1 and 2: System hardware configurations	9	Step 7: Install language packs for Lotus Domino.	27
First-time Lotus Foundations setup on a Lotus Foundations Appliance	9	Step 8: Install the Lotus Notes add-on	29
Meet your Lotus Foundations Appliance	9	Step 9: Install additional features	35
Connect the power	11		
Connect to the local network - Ethernet port 0	12		
Connect to the Internet - Ethernet ports 1 and 2	12		
Power-up sequence	13		
Manually set the IP address - Ethernet port 0	13		
First-time Lotus Foundations setup on third-party hardware	14		
Install Lotus Foundations Core on other hardware	14		

What's new in this release?

The following information describes new features for this release of Lotus® Foundations Start.

Lotus Foundations Run

The Lotus Foundations Run feature provides support for running additional types of applications. Lotus Foundations Run includes support for VMware Server 2 so that customers can protect their existing appliance investment with an experience that is superior to running applications on their native operating environment. Customers will benefit from the stability of a Linux-based system while enjoying the ability to support the wide array of applications irrespective of operating system.

Separately available at no charge to business partners is the VMware Server 2 Add-on for IBM® Lotus Foundations Run which includes a one-click installation of VMware Server 2 for Lotus Foundations.

Lotus Foundations scalable services

Many enterprises have small teams in remote offices and don't have the same IT resources to manage those environments. These remote offices still require comprehensive infrastructure and collaboration solutions to stay connected to the central office, and more importantly, cost effective solutions so they can stay in business. IBM Lotus Foundations scalable services provides support for distributed deployment of Lotus Foundations Start.

Scalable services introduce the ability for multiple Lotus Foundations servers to span across the organization both logically and geographically in order to meet the varying needs of the different segments of the business. They do this by introducing a centralized hierarchical management of the Lotus Foundations servers to provide the overall ease of deployment and administration.

Intelligent disk backup (idb) enhancements

Enhanced idb features include:

- Multi-job support
- Quotas on jobs
- Local encrypted jobs
- Weekly/Monthly backup frequencies
- Data retention (i.e., ability to set threshold for data retention)
- Enhanced user interface
- Ability to suspend jobs

New versions of software

- Lotus Domino® 8.5
- Lotus Notes® 8.5
- Lotus Domino Access for Microsoft® Outlook (DAMO) 8.0.2
- Lotus Symphony 1.2

User interface enhancements

New user interface enhancements include:

- A new backup page with localization of dates/numbers
- A new tabbed layout providing easier navigation
- Login error messages are now larger and appear in red

Additional languages supported

- Russian
- Polish
- Greek
- Czechoslovakian
- Hungarian
- Portuguese
- Turkish

New add-ons available for Lotus Foundations Start

Lotus Foundations Reach provides integrated and secured company-wide instant messaging, voice over IP (VoIP) and video chats capabilities for internal users of small business customers who have already deployed Lotus Foundations Start. A large percentage of small businesses employ a distributed workforce, and need to quickly communicate with other users in real-time in order to be effective and responsive to their customers. Lotus Foundations Reach accomplishes real-time communication among small business users, while maintaining the ease of use and administration Lotus Foundations Start offers. For more information, see the *Lotus Foundations Reach Add-on Guide*.

Introduction

Welcome to the *Lotus Foundations Start Getting Started Guide*. This guide is intended for administrators and provides the basic steps required to install a fully-functioning Lotus Foundations Start server.

This guide is designed to get the basic Lotus Foundations-powered server set up and running quickly, and it covers only the basic installation, configuration, and setup topics. For more advanced features and topics, refer to the *Lotus Foundations Start Administration Guide*.

Important Note: Attention current Net Integration customers: Read the following article at <http://www-01.ibm.com/support/docview.wss?uid=swg21388144> for critical migration information before you attempt any migration from a legacy Nitix server to Lotus Foundations.

Before you get started checklist

Before beginning the installation and configuration of Lotus Foundations, ensure you have the following items:

- Lotus Foundations Start software:

Use either the files that you downloaded from IBM or the software only DVD media pack that you ordered. If you downloaded the software, follow these steps:

1. Unzip all of the downloaded files to a folder on a workstation. For example, unzip to C:\temp\lotusfoundations. The result is:
 - One file named LotusFoundations_11_#####.iso file
 - Several subfolders named *feature_name.pkg*
2. *For third-party hardware only:* Locate the file named LotusFoundations_11_#####.iso and burn it to a CD. Label this disk **IBM Lotus Foundations Core, Disk 1**. You can use any standard CD burning software. You use this CD to boot the server to begin the installation process.

- Lotus Foundations Start activation key.

To fully activate the features that you have purchased, you need to enter an activation key during the initial setup or within the first 30 days after installing. By default, Lotus Foundations Start works in a 30-day trial mode. Until Lotus Foundations Start is activated, some features remain inactive. Your activation key is emailed to you. If you did not receive your activation key, call +1.866.384.8324, and select option 2.

- If you are not using a Lotus Foundations Appliance, hardware that meets the “Steps 1 and 2: System hardware configurations” on page 9
- The fully-qualified internet domain name for the server
- Internet service for activation

Installation summary

Installation should take approximately 30-40 minutes. There are several tasks that are broken down into a set of steps.

Table 1. Task Summary

Step	Task
1 and 2	Set up a Lotus Foundations Appliance that has Lotus Foundations Core preinstalled or Set up your third-party hardware and “Install Lotus Foundations Core on other hardware” on page 14.
3	Create an administrator account
4	Configure disks
5	Install the Lotus Foundations Start add-on
6	Create user accounts for Lotus Foundations Start. These user accounts can immediately access email through a Web browser with the Lotus iNotes [®] feature.
7	Install language packs for Lotus Domino for any additional languages that the end users might need for email and collaboration. .
8	If you require client software to use Lotus Domino email and other groupware components, you can also install the Lotus Notes add-on on Lotus Foundations Start and deploy the client onto the user workstations.
9	Additionally, you can install additional features, such as anti-spam network filtering, Lotus Symphony, Lotus Foundations Run, and DAMO add-on tools.

Steps 1 and 2: System hardware configurations

Lotus Foundations runs on one of two supported hardware configurations:

- Configuration 1: Lotus Foundations Appliance
- Configuration 2: Third-party hardware

First-time Lotus Foundations setup on a Lotus Foundations Appliance

To do an initial set up of a Lotus Foundations Appliance, you simply need to plug it in and connect to the local network and the Internet.

Meet your Lotus Foundations Appliance

The Lotus Foundations Appliance consists of the following components:

1. Lotus Foundations Appliance
2. Lotus Foundations platform (operating system) preloaded.
3. Lotus Foundations Start software DVD (30 day trial license included, requires a separately purchased software license and activation key to operate beyond the 30 day trial).
4. *Lotus Foundations Getting Started Guide* (1)
5. Removable tray keys (2)
6. Side door keys (2)
7. Power supply cord (1)

Front View



Figure 1. Front View of the Lotus Foundations Appliance

To view the server power button, LCD display, and idb disk, gently press the side of the door in (to the right), which unlatches and allows you to open the door. To remove the lower bezel containing the smart swap hard drive(s), push the button located on the lower bezel and carefully remove the bezel from the server cage.

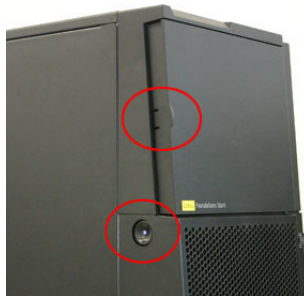


Figure 2. View of the LCD panel on the Lotus Foundations Appliance

Once the door is open and the front bezel has been removed, the server appears as follows:

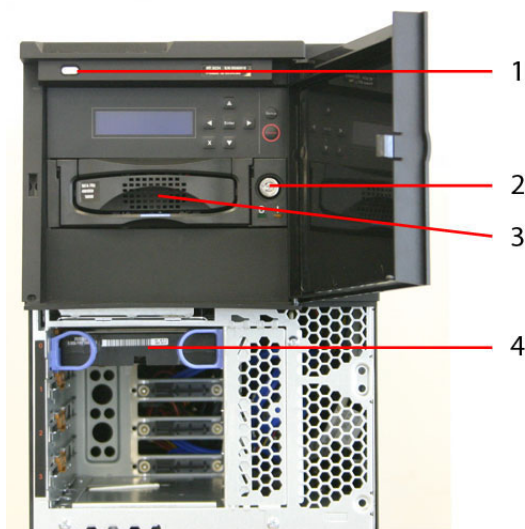


Figure 3. Appliance with the door open

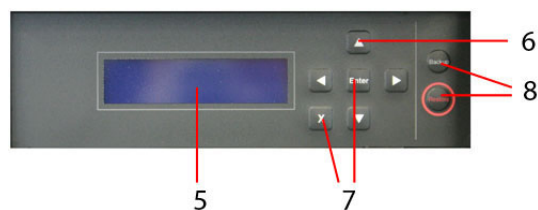


Figure 4. LCD display

1. **Power button** - turns the server on and off
2. **Removable idb disk key lock** - locks the face plate preventing physical access
3. **Removable idb disk** - removable idb tray that is configured as the IDB disk
4. **Removable main disks** - houses the hard drives in a simple swap carrier configured as the main disk array
5. **LCD display** - displays the status of the Lotus Foundations Appliance
6. **Direction arrows** - used to execute commands from the control panel
7. **Enter and Cancel buttons** - used to execute commands from the control panel
8. **Backup and Restore buttons** - used to initiate backup and restore procedures

Back View

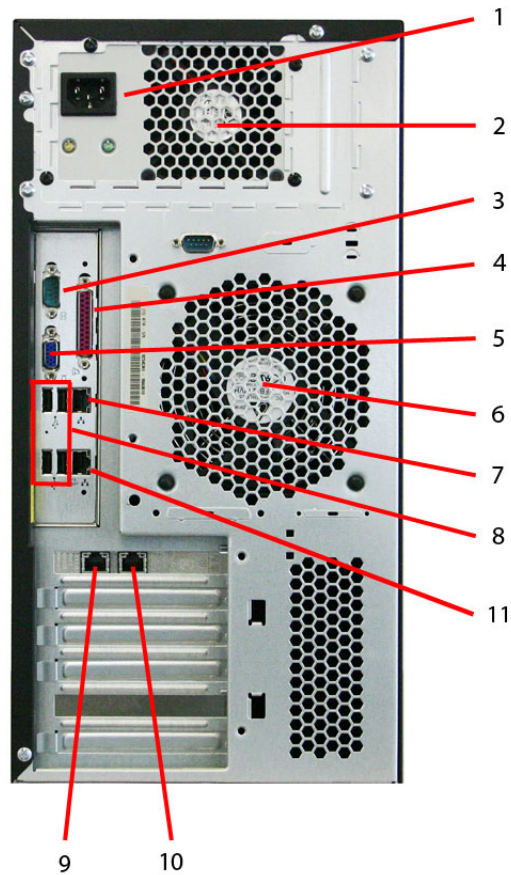


Figure 5. Back view of the Lotus Foundations Appliance

1. **Power socket** - where the power cord is connected
2. **Power supply fan** - provides cooling for internal components
3. **Serial port** - for an external dial-up modem
4. **Parallel printer port** - used for a shared printer
5. **VGA port** - used to connect a monitor to the server
6. **Primary cooling fan** - provides additional cooling for internal components
7. **Ethernet Port 2** - used to connect to a LAN segment or to the Internet
8. **USB ports** - reserved for future use
9. **Ethernet Port 1** - used to connect to a LAN segment or to the Internet
10. **Ethernet Port 0** - used to connect to the local area network (LAN)
11. Reserved for future use.

Connect the power

1. Ensure that the Lotus Foundations Appliance has adequate ventilation. Place the back of the unit at least 1 foot (12 inches) away from the wall. Make sure the front of the unit is easily accessible.
2. Connect one end of the power cord into the power socket on the back of the Lotus Foundations Appliance.
3. Connect the other end of the cord into a standard power outlet.

Connect to the local network - Ethernet port 0

1. Connect one end of an Ethernet cable into Ethernet port 0 located on the back of the Lotus Foundations Appliance.

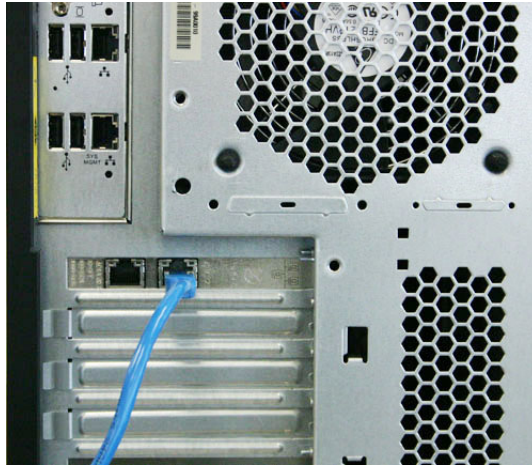


Figure 6. View of Ethernet port 0

2. Connect the other end of the cable into the local area network (LAN) network switch. Ethernet port 0 should not be connected to a router providing Internet access. Ethernet port 0 is typically reserved for internal (local network) access.

Connect to the Internet - Ethernet ports 1 and 2

Ethernet ports 1 and 2 are used to connect to the Internet or to other segments of your local area network (LAN). Use an Ethernet cable to connect to the high-speed Internet routing device. This can be a direct Internet connection, a cable or DSL modem, or a router.



Figure 7. View of Ethernet ports 1 and 2

For information on more advanced configurations or using an external dial up modem, see the *Lotus Foundations Start Administration Guide*.

Power-up sequence

1. Press the power button located on the front of the Lotus Foundations Appliance.
2. The Lotus Foundations Appliance needs a few moments to start up. During the startup, observe the following sequence of events:
 - The hard drive and fans start.
 - The Lotus Foundations Appliance beeps several times.
 - The LCD panel becomes active as the software loads.
3. Let your Lotus Foundations Appliance sit undisturbed while it discovers its surroundings and auto-configures its network parameters. Messages indicating what kind of network discovery is being performed appear on the display panel. After a short time, the Internet protocol (IP) address that the Lotus Foundations Appliance has chosen for itself is displayed. The number is based on the local area network (LAN) to which it is connected and looks similar to this: 192.168.0.1
4. When the startup sequence is over, the display panel shows the status of various Lotus Foundations Appliance systems. The first line on the display panel shows the Lotus Foundations Appliance's IP address; the second line cycles messages displaying the current date, time, and operating system version. You are ready to proceed with the setup when an IP address is displayed on the display panel. In the event that the Lotus Foundations Appliance is unable to detect an appropriate IP address for your LAN, you have to manually set the IP address for the server. Refer to "Manually set the IP address - Ethernet port 0" for more information.

Manually set the IP address - Ethernet port 0

Follow these instructions if:

- The Lotus Foundations Appliance is unable to automatically select an IP address.
 - You want to manually change the chosen IP address.
1. Press the Enter button on the front control panel. The following menu is displayed:

```
MENU [Net] Info
Dialer System
```
 2. [Net] is already selected. Press the Enter button. The following menu is displayed:

```
NETWORK [IP addr]
Netmask DHCP
```
 3. [IP addr] is already selected. Press the Enter button. The current IP address (e.g. 192.168.0.1) is displayed. If the Lotus Foundations was unable to select an IP address, 0.0.0.0 will be displayed.
 4. To change the value of the IP address:
 - a. Use the Left and Right direction arrows to move the cursor from digit to digit.
 - b. Use the Up and Down direction arrows to increase or decrease a digit's value.
 - c. Press the Enter button to save the new IP address.
 5. Using the direction arrows, navigate to **Netmask**. Press Enter. The default Netmask (255.255.255.0) is displayed.
 6. To change the value of the Netmask:
 - a. Use the Left and Right arrows to move the cursor from digit to digit.

- b. Use the Up and Down arrows to increase or decrease the value of a digit.
- c. Press the Enter button to save the new Netmask.

Note: In most circumstances, you do not need to change the default Netmask number.

7. Return to the standard front panel display by pressing the **Cancel** button twice.

Continue to “Step 3: Create an administrator account” on page 19.

First-time Lotus Foundations setup on third-party hardware

Lotus Foundations has built-in diagnostics to help you determine hardware compatibility. The following are third-party hardware requirements:

- Pentium® 4 3.0 GHz processor (or AMD equivalent)
- At least one hard disk. At least two hard drives are needed to back up your data.
- At least one Network Interface Card. Two network cards are needed if this is your network gateway.
- DVD drive
- VGA based video card
- 1 GB RAM
- Monitor
- Keyboard

Your third-party hardware must be free of any other applications, files, or operating environment. It is recommended that a new disk be used. It is strongly recommended that you also have your hardware-specific reference documentation. Lotus Foundations Start first installs the base operating system and overwrites any data on the disk drive. The setup process also configures the disk drives.

Note: Read this tech note for important details on which hardware models are certified and supported for Lotus Foundations products. Do not recommend or propose any specific hardware until you read this tech note: <http://www-01.ibm.com/support/docview.wss?uid=swg21306185>

Before you begin installing on the third-party hardware you need to change the system BIOS to ensure you are able to boot from DVD. Do this through the boot settings in system BIOS. Change the boot priority order to the following:

- First boot device: CD (or DVD)
- Second boot device: hard disk drive

Lotus Foundations installs onto the hard disks after they have been configured.

Install Lotus Foundations Core on other hardware

Note: The Lotus Foundations Core installation is for third-party hardware only. If you are using a Lotus Foundations Appliance, proceed to “Step 3: Create an administrator account” on page 19.

Setting up the server

Follow these steps to set up the Lotus Foundations server on third-party hardware:

1. Connect the power cord to the main power.
2. Connect the local internal LAN connection to Ethernet Port 0 on the server. Connect the other end of the cable into the LAN hub or switch. If the Lotus Foundations server is connecting directly to the Internet, connect the router to Ethernet Port 1 on the server. The router should have all IP, NAT and firewall features disabled.
3. Connect a monitor and keyboard to the appropriate connectors on the server.
4. Press the power button and turn the server on.
5. Ensure the system is configured to boot from a CD/DVD.
6. Insert the CD/DVD labeled **IBM Lotus Foundations Core, Disk 1** into the server's CD/DVD.
7. Reboot the server so it boots from the CD/DVD.

Basic Lotus Foundations installation and configuration

To perform a basic configuration of Lotus Foundations, follow these steps:

1. As the server boots from CD/DVD, select option 1, **Launch Lotus Foundations** by typing 1 and pressing **Enter**. If you do not select an option, Lotus Foundations automatically loads after 10 seconds. This step may take several minutes, and the screen might go blank during this time.
2. When Lotus Foundations has finished loading, the following prompt is displayed at the bottom of the **Use WebConfig Instead** box:
Press ENTER to begin...
Press Enter. A Configuration screen is displayed.

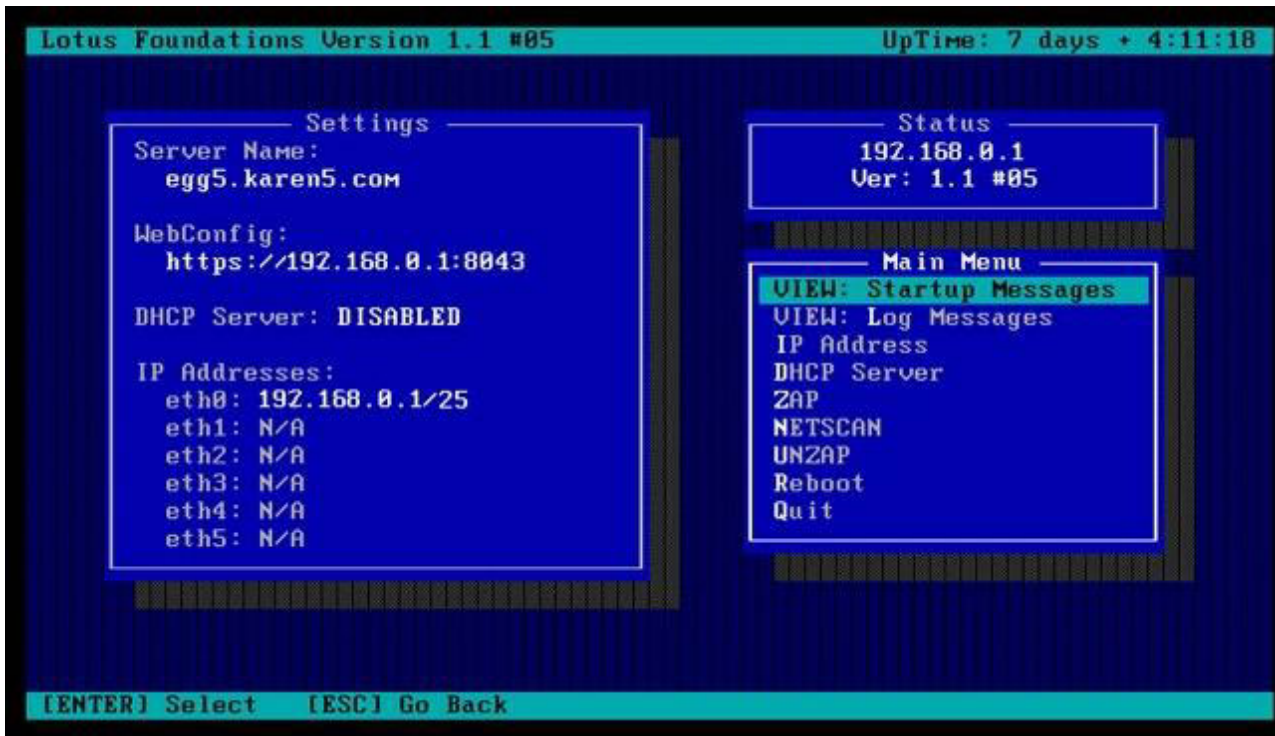


Figure 8. Lotus Foundations server console

3. *Optional:* If your Lotus Foundations server is unable to automatically select an IP address (the console's Status box continues to read Choosing Address) or if you want to change the chosen IP address, you can set the IP address from the console menu:
 - a. Select **IP Address** from the **Main Menu** box on the Configuration screen.
 - b. You are prompted to enter a new IP address. Enter the new IP address and press Enter.
 - c. Confirm the new IP address by pressing Y.



Figure 9. Setting the IP address from the Lotus Foundations server console

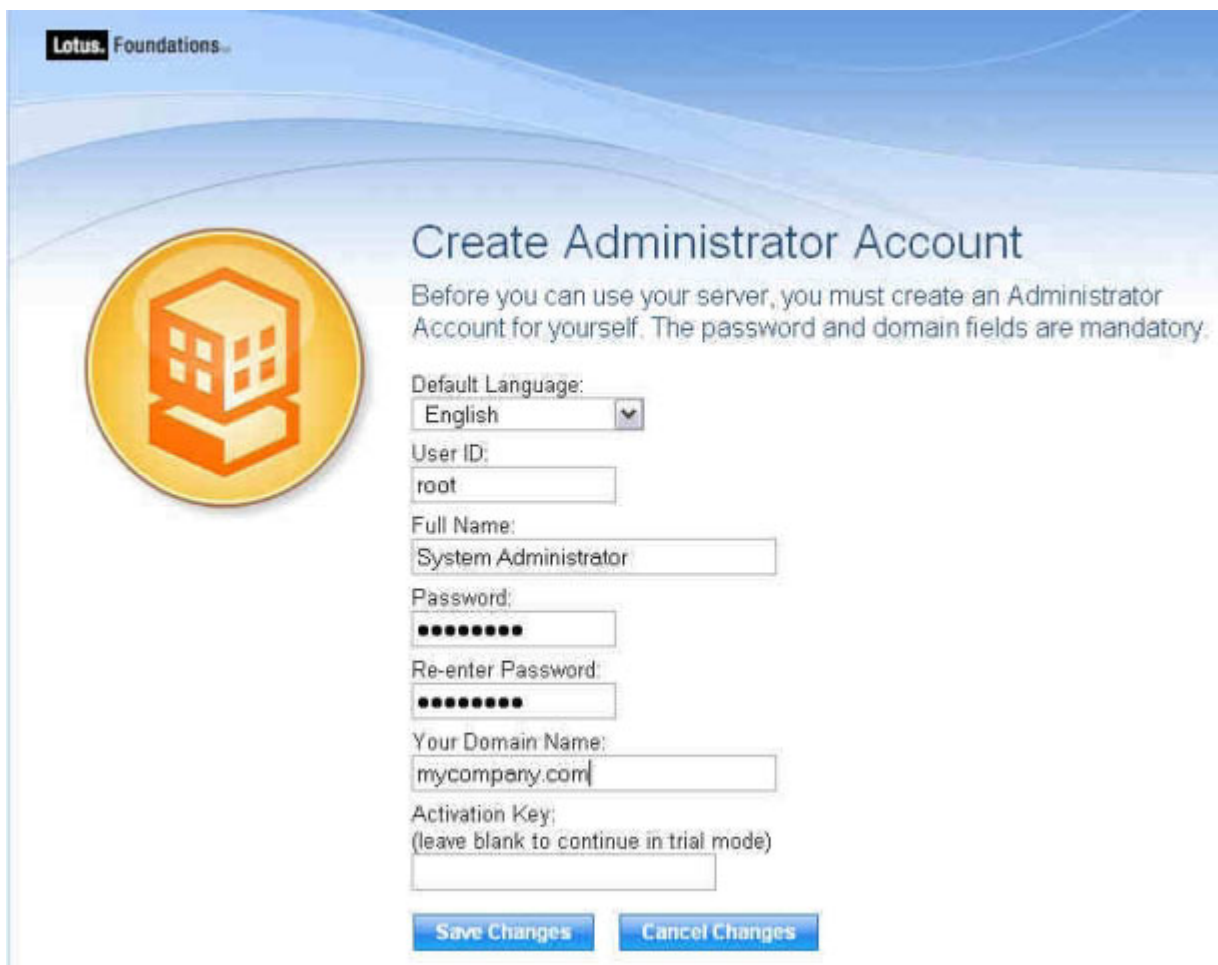
4. The server is assigned a random server name to start with. You can change this before you install Lotus Foundations Start. Take note of the WebConfig URL shown in the **Status** box. This is the local network's IP address (eth 0) of the server. WebConfig is a console used to manage the Branch Office server. You need this IP address to log in to WebConfig and finish the configuration of the server.

Continue to "Step 3: Create an administrator account" on page 19.

Step 3: Create an administrator account

Lotus Foundations is managed through a web-based interface called WebConfig. You can access WebConfig on the server at `https://server_ip_address:8043/`. To create an administrator account, perform the following steps from a Web browser on a workstation that is connected to the same network as the server:

1. Read the IP address on the server console of the Lotus Foundations server. For demonstration purposes, the IP address 192.168.0.1 is used.
2. Open a Web browser on a workstation, and enter the following URL `https://server-ip-address:8043/`. For example: `https://192.168.0.1:8043`
3. Select a default language on the Welcome screen. Read and accept the licenses on the next two screens. The Create Administrator Account page is displayed.



The screenshot shows the 'Create Administrator Account' page in the Lotus Foundations web interface. The page has a blue header with the 'Lotus Foundations' logo. A large orange circular icon with a building symbol is on the left. The main heading is 'Create Administrator Account'. Below the heading, there is a note: 'Before you can use your server, you must create an Administrator Account for yourself. The password and domain fields are mandatory.' The form contains the following fields and controls:

- Default Language: A dropdown menu set to 'English'.
- User ID: A text input field containing 'root'.
- Full Name: A text input field containing 'System Administrator'.
- Password: A text input field with masked characters (dots).
- Re-enter Password: A text input field with masked characters (dots).
- Your Domain Name: A text input field containing 'mycompany.com'.
- Activation Key: A text input field with the instruction '(leave blank to continue in trial mode)'.

At the bottom of the form are two buttons: 'Save Changes' and 'Cancel Changes'.

Figure 10. Creating an administrator account

4. To create an administrator account, leave the user ID as **root**. Enter a valid password, and reenter the password. Write this password down in case you forget it. Caution: the administrator user ID must be **root**. You can create additional administrator accounts later.

5. Enter a domain name. Any domain name can be entered at this point. The organization's real domain name is required before you install Lotus Foundations Start.
6. Enter the software activation key in the **Activation Key** field. For more information on this, consult the *Lotus Foundations Start Administration Guide*.
7. Click **Save Changes**. The Administrator Account Created page displays.
8. Click **Login**. Use the **root** user ID and password you just created to login to WebConfig. WebConfig continues the setup and server configuration.

Entering or changing an activation key at a later date

There are two reasons why you might need to do this procedure:

1. You did not have the activation key when you did the initial installation.
2. You want to change an existing activation key that is already installed.

In either case, follow these steps:

1. Open a Web browser on the workstation to `https://server_ip_address:8043/`.
2. Enter an administrator user ID and password.
3. Click **Software Update** in the left-side menu of WebConfig.

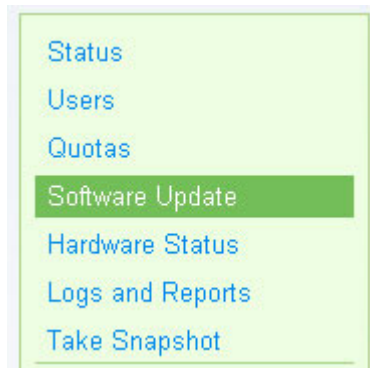


Figure 11. Software Update menu selection of WebConfig

4. Edit the Foundations Registration section and enter the activation key. Save your changes.

Step 4: Configure disks

Follow these steps to configure the disks on a Lotus Foundations server:

1. From the main WebConfig Page, select the **Status** link on the left side. The **Disk Status** section in the **Services Status** table displays that the disks have not been configured. You have two options for disk configuration:
 - RAID (no backup) - configures all disks into a RAID array
 - RAID plus idb (backup) - configures all except the last disk into a RAID array and configures the last disk as the backup disk.

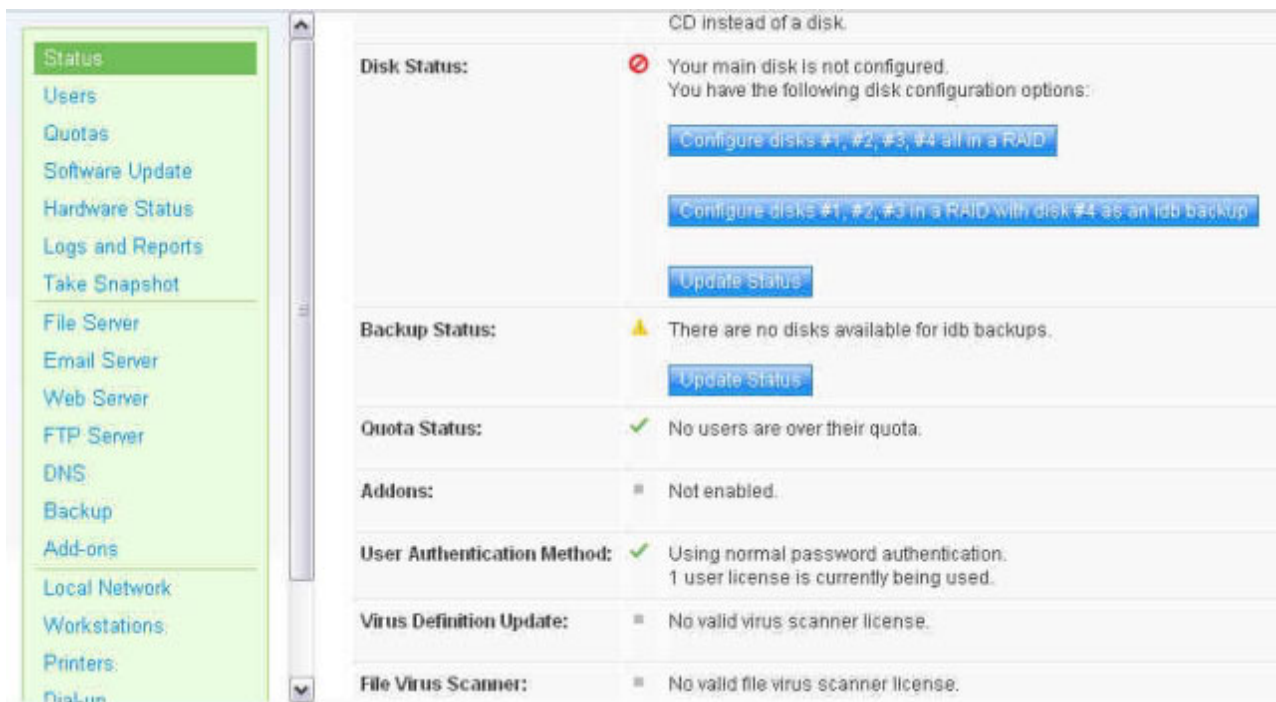


Figure 12. Disk status options displayed in the WebConfig console

2. Click the appropriate link to configure the disks.
 - For example, if you have two disks, the **Disk Status** section displays "The main disk is not configured. You can configure disks #1, #2 all in a RAID or disk #1 as a standalone disk and #2 as an idb backup disk." If you have three disks, the **Disk Status** section displays "The main disk is not configured. You can configure disks #1, #2, #3 all in a RAID or disk #1.#2 in a RAID and disk #3 as an idb backup disk." A Lotus Foundations server could have up to 6 drives, and a third-party server could potentially have more.
 - For a RAID configuration, click **All in a RAID**. If you want to enable idb backup, click **Disk #2 as an idb backup disk**.
 - If you select a RAID configuration, then the RAID array begins to rebuild. This process does not noticeably affect the performance of Lotus Foundations.

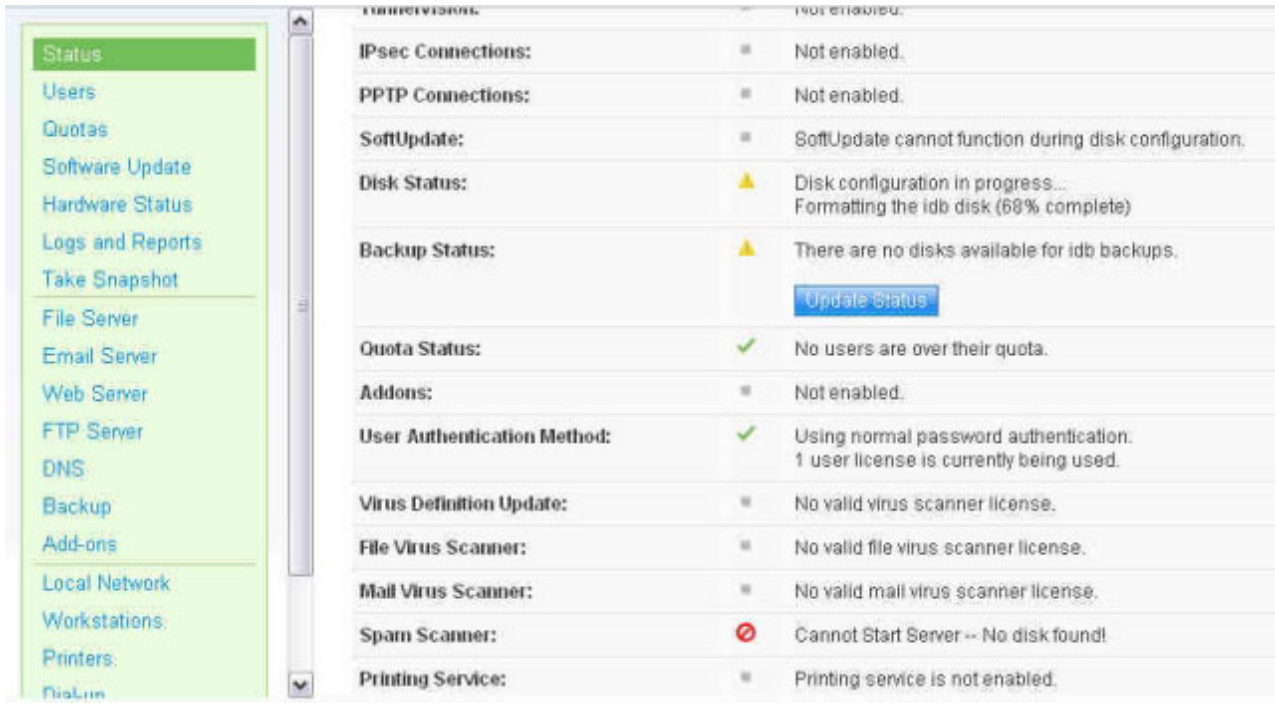


Figure 13. Disk configuration in progress

For more information on disk configuration, refer to the *Lotus Foundations Start Administration Guide*.

Reboot

When the disks have been configured, you need to follow these steps:

1. Shut down the server.
2. *For third party hardware only:* Remove the CD/DVD.
3. Power the server on.

The server should now boot directly from the configured disks.

Step 5: Install the Lotus Foundations Start add-on

Installation of the Lotus Foundations Start add-on enables the Lotus Domino email and collaboration features of the Lotus Foundations family of products.

Important Note: Ensure you have set up the correct host name and domain name for the server. They cannot be changed after the installation of Lotus Foundations Start. To change these from the WebConfig console, select **Local Network** from the menu on the left side. Edit the **Host Name** and **Domain Name** fields accordingly. Save any changes.

With the Lotus Foundations server running and configured, follow these steps:

1. If you have a DVD, insert the DVD labeled **Lotus Foundations Start Disk 2** into the server.

If you downloaded the software to a workstation, follow these steps:

- a. Connect to the **autoinstall** file share on the Lotus Foundations server. To do this, from a workstation, click **Start** → **Run** and then enter '\\\' followed by the server's IP address, followed by \autoinstall. For example, \\192.168.0.1\autoinstall
Note: This does not work if Windows® File Sharing is disabled. If you are using Windows Vista, you must enter the information in the text bar in the start menu.
 - b. Enter the administrative account and password.
 - c. Locate the folder where you unzipped the Lotus Foundations Start packages. The naming convention is lfstart-domino850-*nnnn*.pkg. (for example, lfstart-domino850-2760.pkg)
 - d. Copy the Domino lfstart-domino850-*nnnn*.pkg into the **autoinstall** folder. Wait for the files to be copied to the server's **autoinstall** folder before you proceed.
2. At the WebConfig URL for the server (https://server_ip_address:8043), select **Software Update** from the menu on the left. In the "Add-on packages available for install" section, a list of installable packages is displayed. If there is no list of available packages, wait several seconds and refresh the screen again. The Lotus Foundations Start package should be listed and displayed as: "Lotus Foundations Start 1.1 (Team autoinstall/lfstart-domino-850-*nnnn*.pkg)" or "Lotus Foundations Start 1.1 (DVD-ROM)."
 3. Click **Install** next to the Lotus Foundations Start add-on; read and accept the license agreements. The installation begins immediately, but the entire installation process may take up to 30 minutes.
 4. Click **Status** from the menu on the left and scroll to the Add-ons section. A green check mark is displayed to the left of the product after installation that verifies Lotus Foundations Start has installed successfully. The product automatically runs. There is no need to turn it on.

Step 6: Create user accounts for Lotus Foundations Start

After installing Lotus Foundations Start, the next step is creating user accounts. These provide access to Lotus Domino email and business applications, including Lotus Notes, Lotus iNotes, and Lotus Domino Access for Microsoft Outlook (DAMO).

Creating a user account

To create a user account in Lotus Foundations, follow these steps:

1. Select **Users** from the menu on the left side of the WebConfig console.
2. Click **Add User**.
3. Enter the ID that serves as the user's login and personal directory name. User IDs cannot contain spaces or any punctuation other than hyphens, periods, or underscores. For example, jane-doe, jane.doe, and jane_doe are all acceptable user IDs. With Lotus Foundations Start installed, this user ID becomes part of the user's email address. For example, if the user ID janedoe is created on a Lotus Foundations server that resides in the mycompany.com domain, Jane's email address is janedoe@mycompany.com. A user ID in Lotus Foundations Start cannot be modified, so be sure that the ID is spelled correctly.
4. Enter the full name of the user. This full name must be unique for each user. Avoid using any special characters in user names. If any are used, for example, the 'at' sign, they are removed. This can be changed later.
5. Enter a password for the user.
6. Re-enter the password for the user to ensure that it was entered correctly. If the passwords do not match, you are asked to reenter the password in both fields.

Create User	
User ID:	<input type="text" value="janedoe"/>
Full Name:	<input type="text" value="Jane Mary Doe"/>
Password:	<input type="password" value="••••••••"/>
Re-enter Password:	<input type="password" value="••••••••"/>
Preferred Language:	<input type="text" value="English"/> ▼
Administrator Access:	<input type="radio"/> Yes <input checked="" type="radio"/> No
Allow FTP Access:	<input type="radio"/> Yes <input checked="" type="radio"/> No
Allow VPN (PPTP) Access:	<input checked="" type="radio"/> Yes <input type="radio"/> No
Quota Value:	<input type="text" value="Unlimited"/> ▼
Email Quota Value:	<input type="text" value="Unlimited"/> ▼

Figure 14. Creating a User

7. Click **Save Changes**. You are returned to the main User Setup page, and the user is displayed in the list.

Note: It takes a few minutes for Lotus Foundations Start to initialize the new user in Lotus Domino. You can refer to the Add-ons section in the System Status page for feedback.

Accessing email through a Web browser

When user accounts have been created, the users can log into Lotus iNotes by entering the following URL into a Web browser:

```
http://server_ip_address/mail
```

The user is prompted to login to their email account.

Step 7: Install language packs for Lotus Domino

The server is now set up, but if you want to set up the server and user support for other languages, you need to install language packs for Lotus Domino. Installing the Lotus Domino language packs lets users have an email template and see items in Lotus iNotes in their preferred language.

1. If you have a DVD, insert the DVD labeled **Lotus Foundations Start, Disk 3** for the Lotus Domino language packs.

If you downloaded the software to your workstation, do the following tasks:

- a. Connect to the **autoinstall** file share on the Lotus Foundations server. To do this, on your workstation, click **Start** → **Run** and then enter '\\\' followed by the server's IP address, followed by \autoinstall. For example:
\\192.168.0.1\autoinstall
 - b. Enter the administrative account and password.
 - c. Locate the folder where you unzipped the Lotus Foundations Start software packages. The naming convention is lf-domino850-LP-*language code.mnnn.pkg*, where *language_code* is a two character code for the language. (for example, lf-domino850-LP-fr.2760.pkg for French)
 - d. Drag the Domino lf-domino850-LP-*language code.mnnn.pkg* into the **autoinstall** folder. Wait to proceed until all of the files are copied to the server autoinstall directory.
2. At the WebConfig URL for the server (https://server_ip_address:8043), click **Software Update** from the menu on the left side of the WebConfig screen.
 3. A list of installable packages is displayed. If there is no list of available packages, wait several seconds and refresh the screen again. The Lotus Domino language pack should be listed and should be displayed as: Domino Language Pack Installer for *language* (Team autoinstall/lf-domino850-LP-cc-*mnnn.pkg*).
 4. Click **Install** on the Lotus Foundations Start Domino language pack; read and accept the license agreements. The installation begins immediately and might take a few moments .
 5. Verify the setup is complete on the main status page in the Add-ons section.

Note: You can add language packs at any time.

Change user primary language setting

1. Click **Users** from the menu on the left side of the WebConfig screen.

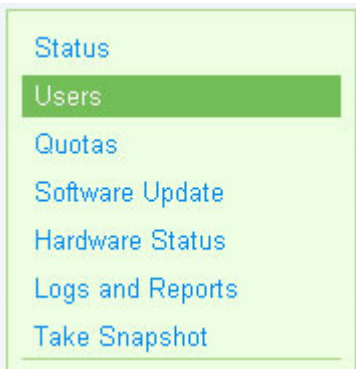


Figure 15. Users menu selection in the WebConfig console


2. Locate the user that you want change, and click the **Edit** icon  for the user.
3. On the Modify User screen, locate the **Preferred Language** drop-down and select the language for the user.



Figure 16. Selecting a preferred language

4. When you set the preferred language of the user, Lotus Foundations Start automatically updates any one-click installers in the home directory of the user to appear in that language.

Note: You can change the preferred language of the user at a later time.

Step 8: Install the Lotus Notes add-on

After Lotus Foundations Start installation and user account creation, you can use Lotus iNotes for email for all users. You can also install a workstation client program to interact with the Domino email server.

The IBM Lotus Notes client is the recommended option for efficient use of the Lotus Foundations Start platform. The IBM Lotus Notes client provides mechanisms for email, collaboration, shared calendaring, and access to other Domino applications.

IBM Lotus Foundations Start Lotus Notes add-on

The Lotus Notes add-on enables you to easily deploy the Lotus Notes workstation clients to the end users. This is a two part process.

1. Install the Lotus Foundations Start Lotus Notes add-on feature to the server.
Optional: Install language packs.
2. Install the Lotus Notes clients to the workstations.

Part 1: Install the IBM Lotus Foundations Start Lotus Notes add-on feature to the server

To install the server add-on package on the Lotus Foundations server, follow these steps:

1. If you have a DVD, insert the DVD labeled **Lotus Foundations Start Disk 2** into the server.
If you downloaded the software to your workstation, do the following:
 - a. Connect to the **autoinstall** file share on the Lotus Foundations server. To do this, from a workstation, click **Start** → **Run** and then enter '\\\' followed by the server's IP address, followed by \autoinstall. For example:
\\192.168.0.1\autoinstall
 - b. Enter the administrative account and password.
 - c. Locate the folder where you unzipped the Lotus Foundations Start Lotus Notes package. The naming convention is lf-notes85-*nnnn*.pkg. (for example, lf-notes85-2760.pkg)
 - d. Drag the Lotus Notes file lf-notes85-*nnnn*.pkg into the **autoinstall** folder. Wait to proceed until all of the files are copied to the server **autoinstall** folder.
2. At the WebConfig URL for the server (https://server_ip_address:8043), click **Software Update** from the menu on the left side of the WebConfig screen.
3. A list of installable packages is displayed. If there is no list of available packages, wait several seconds and refresh the screen again. The Lotus Notes add-on package should be listed and should be displayed as: Lotus Notes 8.5 for Lotus Foundations Start (Team autoinstall/lf-notes85-*nnnn*.pkg).
4. Click **Install** on the Lotus Notes add-on; read and accept the license agreements. The installation begins immediately and might take a few moments.
5. Verify the setup is complete on the main status page in the Add-ons section.

Install Lotus Notes language packs

The languages for the Lotus Foundations Start - Lotus Notes add-on are provided in language pack groups. Before you start the installation process, determine which language pack groups you need.

- G1 refers to Brazilian Portuguese, French, German, Italian, Spanish, Japanese, Korean, Simplified Chinese, Traditional Chinese
- G2a refers to Danish, Dutch, Finnish, Norwegian-Bokmal, Swedish
- G2b refers to Russian, Polish, Greek, Czech, Hungarian, Portuguese, Turkish

Follow these steps for the language pack group installation:

1. If you have a DVD, insert the DVD labeled **Lotus Foundations Start, Disk 2** for the Lotus Notes language packs.
If you downloaded the software to your workstation, do the following:
 - a. Connect to the **autoinstall** file share on the Lotus Foundations server. To do this, from a workstation, click **Start** → **Run** and then enter '\\\' followed by the server's IP address, followed by \autoinstall. For example:
\\192.168.0.1\autoinstall
 - b. Enter the administrative account and password.
 - c. Locate the folder where you unzipped the Lotus Foundations Start Lotus Notes language package. The naming convention is lf-notes85-MUI-*language_pack-nnnn*.pkg, where *language_pack* refers to the language pack group. (for example, lf-notes85-MUI-G1-2760.pkg for the group 1 languages)
 - d. Copy the Domino lf-notes85-MUI-*language_pack-nnnn*.pkg into the **autoinstall** folder. Wait to proceed until all of the files are copied to the server **autoinstall** folder.
2. At the WebConfig URL for the server (https://server_ip_address:8043), click **Software Update** from the menu on the left side of the WebConfig screen.
3. A list of installable packages is displayed. If there is no list of available packages, wait several seconds and refresh the screen again. The Lotus Notes language pack should be listed and should be displayed as: Lotus Notes 8.5 MUI Pack for *language_pack* (Team autoinstall/lf-notes85-MUI-*language_pack-nnnn*.pkg)
4. Click **Install** on the Lotus Foundations Start Notes® language pack; read and accept the license agreements. The installation begins immediately and might take a few moments.
5. Verify the setup is complete on the main status page in the Add-ons section. The Lotus Notes installer automatically installs Lotus Notes in the preferred language of the user.

Note: You can add language packs at any time.

Part 2: Install the Lotus Notes clients to the workstations

These instructions are for the one-click installation and configuration of Lotus Notes.

To install Lotus Notes on the client workstations, follow these steps:

1. From the user's workstation, connect to the user's file share on the Lotus Foundations server. To do this, click **Start** → **Run** and then enter '\\\' followed by the server's IP address, followed by \USERNAME. For example, type \\192.168.0.1\USERNAME where USERNAME corresponds to the user that you want

to configure on the Lotus Foundations server.

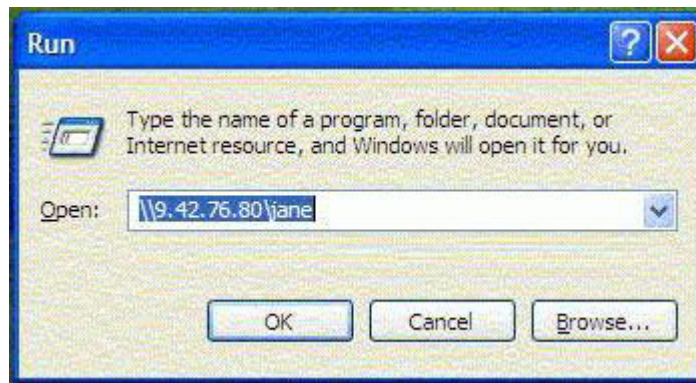


Figure 17. Accessing the user's workstation

2. Navigate to the **LotusFoundations** → **NOTES85_INSTALL** folder and double-click the **NOTES85_SETUP.BAT** file. Select **Run** when prompted. The Notes Installation and Setup screen displays. Press any key to continue.
Note: When the command prompt window opens, a message is displayed that states: UNC paths are not supported. Defaulting to Windows directory. (as shown in the following screen shot). This message can be ignored.

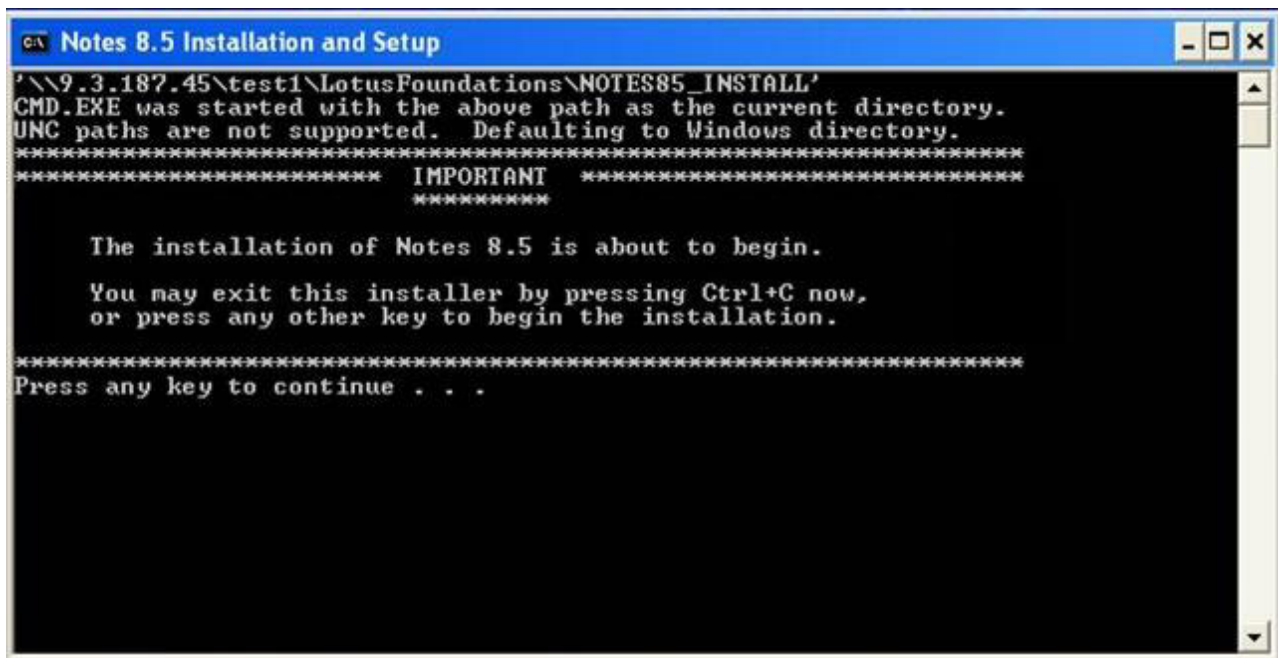


Figure 18. Notes Installation and Setup screen

3. The installation should take approximately five to ten minutes for a workstation that is on the same local network as the Lotus Foundations server. When the installation is complete, you should see a message stating that the setup is complete. Click **OK**. The Installation and Setup screen appears. Press any key and the program closes.

```
Notes 8.5 Installation and Setup
ID file found.
Creating c:\temp\nxbtmp...
Copying Notes 8.5 installation files (this may take a few minutes)...
Copy done.
Installing Notes 8.5 (this may take a few minutes)...
Notes 8.5 installation completed successfully.
Configuring auto-setup...
Copying test1.id to Notes data directory...
Copied test1.id successfully.
Notes 8.5 auto-setup is configured. When you run Notes 8.5 using the
installed 'Lotus Notes 8' desktop icon or Start menu item, you will only need
to supply your password to complete the installation and setup process.
A permanent record of this installation may be found in:
c:\Notes85_Setup.log
Press any key to continue . . .
```

Figure 19. Notes Installation and Setup complete

Note: If the preferred language of the user is not English and you have installed the corresponding language pack for Lotus Notes on the server, then the Lotus Notes client installation also includes the language pack.

4. Open Lotus Notes from either a desktop icon or the **Start** menu.
5. Enter the Lotus Notes password and click **OK**.
6. Lotus Notes performs an initial setup that can take several minutes. When the initial setup is complete, Lotus Notes opens and the installation is complete.

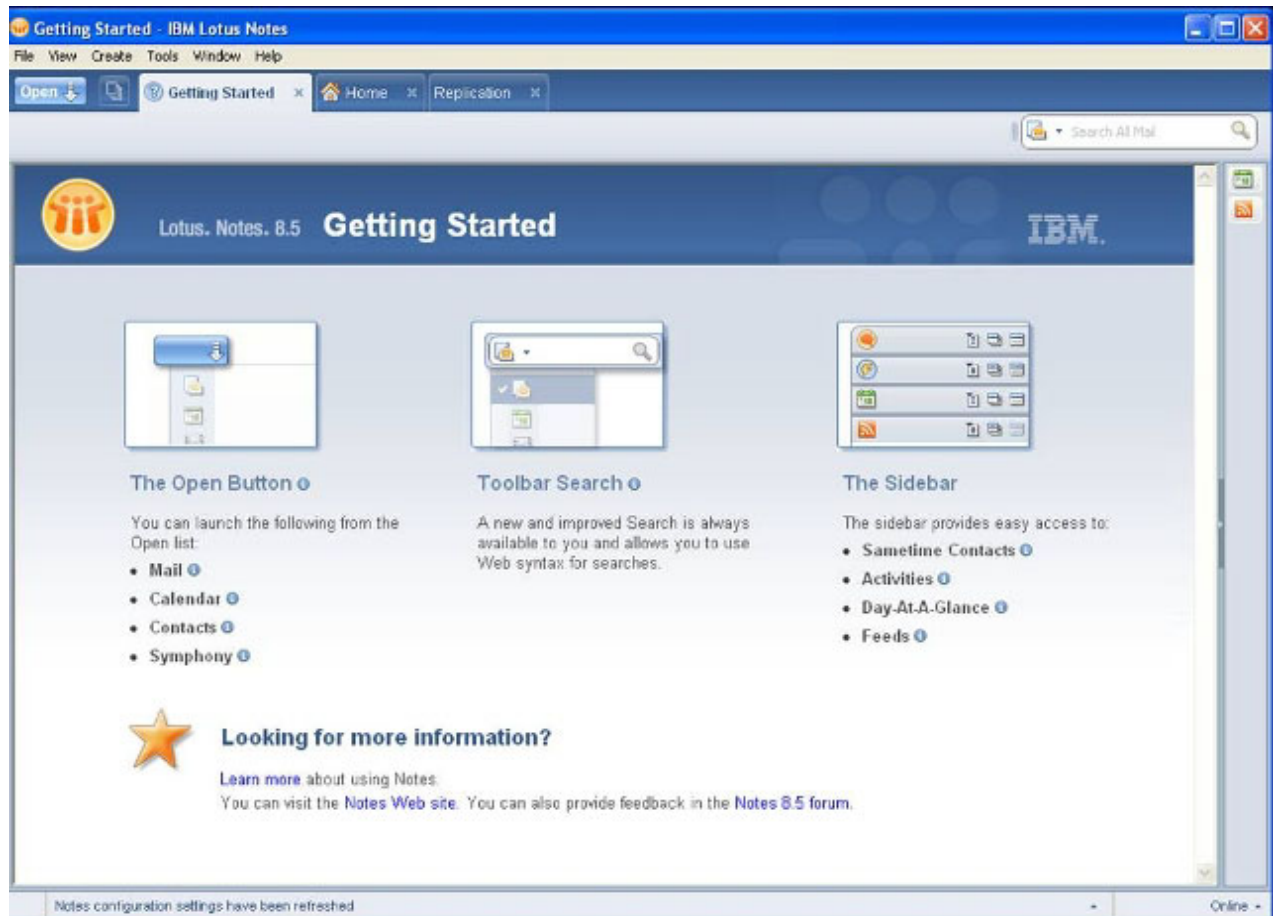


Figure 20. Lotus Notes Welcome screen

Installing language packs for Lotus Notes to the client workstation

The one-click installation process automatically installs the language pack when the user installs Lotus Notes. Language packs can be installed at any time.

Step 9: Install additional features

Lotus Foundations Start has additional features you can install. The following references guide you through the setup and configuration of these features:

- Lotus Foundations Reach add-on: This provides the option to add integrated and secured company-wide instant messaging, voice over IP (VoIP) and video chats capabilities for internal users of small business customers. See the *Lotus Foundations Reach Add-on Guide*.
- Lotus Foundations Run add-on: This provides users with the ability to run Windows applications on a Lotus Foundations server. See the *Lotus Foundations Run add-on* chapter of the *Lotus Foundations Start Administration Guide*.
- Anti-Spam Network Filtering: See the *Spam scanner* chapter of the *Lotus Foundations Start Administration Guide*.
- Lotus Symphony: See the *Lotus Symphony* chapter of the *Lotus Foundations Start Administration Guide*.
- Lotus Domino Access for Microsoft Outlook (DAMO): See the *Installing the Lotus Domino Access for Microsoft Outlook (DAMO) add-on* chapter of the *Lotus Foundations Start Administration Guide*.