

Lotus Foundations Start Getting Started Guide



Lotus Foundations Start Getting Started Guide

Version 1 Release 0

Lotus Foundations Start Getting Started Guide



Lotus Foundations Start Getting Started Guide

Version 1 Release 0

Note

Before using this information and the product it supports, read the information in copyright.

First Edition (June, 2008)

This edition applies to version 1, release 0, modification 0 of Lotus Foundations (product number 601-0011-01) and to all subsequent releases and modifications until otherwise indicated in new editions.

© **Copyright International Business Machines Corporation 2008.**

US Government Users Restricted Rights – Use, duplication or disclosure restricted by GSA ADP Schedule Contract with IBM Corp.

Contents

Lotus Foundations Start Getting Started Guide 1

Introduction	1
Before you get started checklist	1
System hardware requirements	2
Configuration 1 - Certified Hardware	2
Configuration 2 - Third - party hardware	2
Summary of installation	2
Lotus Foundations operating system installation	3
Installing Lotus Foundations	3
Setting up the server	3
Basic Lotus Foundations configuration	3
Create an administrator account	4
Configuring disks	6
Reboot	7
Lotus Foundations Start module installation	7
User account creation for Lotus Foundations Start	8
Creating a user account.	8
Accessing email through a Web browser	9

Lotus Foundations Start DAMO Addon	10
One-Click IBM Domino for Microsoft Outlook (DAMO) Installation	10
Uninstalling the DAMO Addon.	11
Client program installation for Lotus Foundations Start	11
IBM Lotus Foundations Start Lotus Notes addon	12
Part 1: Installing the IBM Lotus Foundations Start Lotus Notes addon feature to the server	12
Part 2: Install the Lotus Notes clients to the workstations	13
Installing language packs.	14
Installing language packs for the Lotus Foundations Start - Domino addon	14
Installing language packs for the Lotus Foundations Start - Notes addon	15
Change user primary language setting	16
Additional features you can install	17
Copyright	17

Lotus Foundations Start Getting Started Guide

Introduction

Welcome to the Lotus Foundations Start Getting Started Guide. This document is intended for administrators and provides the basic steps required to install a fully-functioning Lotus Foundations Start.

This guide is designed to get the basic Lotus Foundations-powered server set up and running quickly, but it covers only the basic installation, configuration, and set-up topics. For more advanced features and topics, refer to the online documentation for Lotus Foundations at (<http://kb.nitix.com/5987>).

Warning

Attention current Net Integration customers: Please read the following article (<http://kb.nitix.com/6093>) for critical migration information before you attempt any migration from a legacy Nitix server to Lotus Foundations.

Before you get started checklist

Before beginning the installation and configuration of Lotus Foundations, consult this checklist to ensure that you have all that is needed.

1. Lotus Foundations Start software. Use either the files that you downloaded from our Partner Site, the CD media pack that came included with your Foundation Appliance or the Software Only Media Pack that you ordered. If you downloaded the software perform the following steps:
 - a. Unzip all of the downloaded files to a folder on a workstation. For example unzip to, C:\temp\lotusfoundations. The result is:
 - one file named LotusFoundations_10_1nnn.iso file
 - several subfolders named <feature_name>.pkg
 - b. Locate the file named LotusFoundations_10_1nnn.iso and burn it to a CD. Label this disk IBM Lotus Foundations, Disk 1. You can use any standard CD burning software. You use this CD to boot the server to begin the installation process.
2. Lotus Foundations Start activation key. To fully activate the features that you have purchased, you must enter a software activation key during the initial setup, or within the first 30 days after installing. By default, Lotus Foundations Start will work in a 30-day trial mode. Until Lotus Foundations is activated, some features remain inactive. Your activation key is sent to you via email. If you did not receive your activation key, please call +1.866.384.8324, and select option 2.
3. Check your hardware against the list in this section titled System Hardware Requirements
4. Internet domain name for the server
5. Activation requires internet access; verify that you have internet service.

System hardware requirements

Lotus Foundations runs in one of two supported hardware configurations.

Configuration 1 - Certified Hardware

- Lotus Foundations Server

Configuration 2 - Third - party hardware

- x86 based system
- At least one hard disk. At least two hard drives are needed to backup your data.
- At least one Network Interface Card. Two network cards are needed if this is your network gateway.
- CD-ROM drive
- VGA based video card
- 1GB RAM
- Monitor
- Keyboard

Your 3rd party hardware must be free of any other applications, files, or operating environment. Lotus Foundations Start first installs the base operating system and overwrites any data on the disk drive. The setup process also configures the disk drives.

Before you begin installing on the 3rd party hardware you need to change the system bios to ensure you are able to boot from CD-ROM or DVD-ROM. You can do this through the boot settings in system BIOS. Change the boot priority order to the following:

- First boot device: CD (or DVD)
- Second boot device: hard disk drive

Important Note

For installation, the system must boot from the CD-ROM. this can be accomplished by changing your boot options in the system BIOS. Lotus Foundations installs onto the hard disks after they have been configured.

Summary of installation

Installation should take approximately 30-40 minutes. There are several tasks that are broken down into a set of steps.

- Step 1 and Step 2: Set up either a Lotus Foundations Server that has Lotus Foundations pre-installed; or setup your third party hardware and install and configure the Lotus Foundations base environment (operating system).
- Step 3: Install and configure the Lotus Foundations Start software.

- Step 4: Create one or more user accounts in WebConfig. These user accounts can immediately access email through a Web browser with the Domino Web Access (DWA) feature.
- Step 5: If you require client software to use Domino mail and other groupware components, you can also install the IBM Lotus Notes add-on on the Lotus Foundations Server and deploy the client onto the user workstations.
- Step 6: Install language packs for any additional languages you need for email and collaboration.
- Step 7: Install the optional components, such as Domino Access for Microsoft Outlook, anti-spam network filtering and Lotus Symphony tools

Lotus Foundations operating system installation

Installing Lotus Foundations

If you are using a Lotus Foundations Server, refer to the Lotus Foundations Server Quick Start Guide for more information. After you configure Lotus Foundations Server, proceed to the Lotus Foundations Start module installation section.

If you are installing Lotus Foundations on any other hardware model, perform the following steps.

Setting up the server

Follow these steps to setup the Lotus Foundations server on 3rd party hardware.

1. Connect the power cord to the main power.
2. Connect the Local Internal LAN connection to Ethernet Port 0 on the server. Connect the other end of the cable into the LAN hub or switch. If you have additional Ethernet ports to connect to the internet or to other segments of your LAN, connect them now.
3. Connect a monitor and keyboard to the appropriate connectors on the server.
4. Press the power button and turn the server on.
5. Go to the system BIOS and configure it to boot from CD ROM.
6. Insert the CD Labeled "IBM Lotus Foundations, Disk 1" into the server's CD ROM.
7. Reboot the server so that it boots from CD ROM.

Basic Lotus Foundations configuration

To perform a basic configuration of Lotus Foundations, perform the following steps:

1. As the server boots from CD, select option 1, "Launch Lotus Foundations" by typing 1 and pressing Enter. If you do not select an option, Lotus Foundations automatically loads after 10 seconds. This step may take several minutes, and the screen might go blank during this time.

- Observe the screen, and the instruction press Enter for a shell. Then press Enter to see the configuration screen.

```

Lotus Foundations Version 1.0.1 #02                               UpTime: 0:06:45

----- Settings -----
Server Name:
industry8.weavernet.null

WebConfig:
https://192.168.0.1:8043

DHCP Server: DISABLED

IP Addresses:
eth0: 192.168.0.1/24
eth1: N/A
eth2: N/A
eth3: N/A
eth4: N/A
eth5: N/A

----- Status -----
192.168.0.1
06-12 19:31

----- Main Menu -----
VIEW: Startup Messages
VIEW: Log Messages
IP Address
DHCP Server
ZAP
NETSCAN
UNZAP
Reboot
Quit

[ENTER] Select [ESC] Go Back

```

- Optional: Set the IP address from the console menu. For example, provide a valid IP address in this format X.X.X.X/24. The system chooses an IP if you are on the network, though you can update it at this time.

```

Lotus Foundations Version 1.0.1 #02                               UpTime: 0:07:45

----- Settings -----
Server Name:
industry8.weavernet.null

WebConfig:
https://192.168.0.1:8043

DHCP Server:

IP Addresses:
eth0: 192.168.0.1/24
eth1: N/A
eth2: N/A
eth3: N/A
eth4: N/A
eth5: N/A

----- Status -----
192.168.0.1
06-12 19:32

----- Main Menu -----
VIEW: Startup Messages
VIEW: Log Messages
IP Address
DHCP Server
ZAP
NETSCAN
UNZAP
Reboot
Quit

New IP Address
Enter a new primary IP address with
the netmask (e.g. 192.168.1.100/24):
192.168.0.1/24

[ENTER] Select [ESC] Go Back

```

Create an administrator account

You can manage Lotus Foundations through a web-based interface called WebConfig. You can access WebConfig on your server at <https://your-server-ip-address:8043/>. To create an administrator account, perform the following steps from a Web browser on a workstation that is connected to the same network as the server:

- Read the IP address on the server console of the Lotus Foundations Server. For demonstration purposes, the IP address 192.168.0.1 is used.
- Open a Web browser on a workstation, and enter in the IP address for your server, appending port 8043. You must use a secure Web connection using https. For example: (<https://192.168.0.1:8043>)
- Observe the Welcome screen, and accept the licenses. The Create Administrator Account page is displayed.

Lotus Foundations

Create Administrator Account

Before you can use your server, you must create an Administrator Account for yourself. The password and domain fields are mandatory.

Default Language: English

User ID: root

Full Name: System Administrator

Password:

Re-enter Password:

Your Domain Name: mycompany.com

Activation Key: (leave blank to continue in trial mode)

Save Changes Cancel Changes

4. Create an administrator account. Leave the userid as **root**. Enter a valid password, and reenter the password. You might want to write this password down and keep it in a safe place in case you forget it. Caution: the admin user ID must be root.
5. Carefully enter the registered internet domain name of your organization. This information must be entered correctly as it cannot be changed later.
6. Enter the software activation key in the activation key field. For more information on this, consult the Lotus Foundations Start User's Guide.
7. Click Save Changes. The Administrator Account Created page displays.
8. Click Login. WebConfig continues the setup and server configuration.

Activating a system at a later time

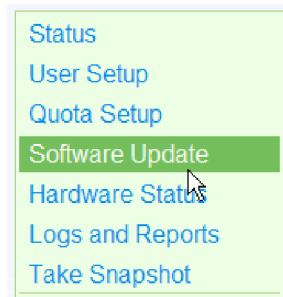
There are two reasons why you might need to do this procedure:

1. You did not have the activation key when you did the initial installation.
2. You want to change an existing activation key that is already installed.

In either case, perform the following steps:

1. Open a Web browser on your workstation.
2. Read the IP address on the console of the Lotus Foundations Server. For demonstration purposes, the IP address 192.168.0.1 is used.
3. Enter (<https://192.168.0.1:8043>) into the Web browser's address bar and press Enter. The login screen is displayed.
4. Enter the administrator login.

5. Enter the administrator password.
6. From the main WebConfig Page, navigate to the Software Update link on the left side.

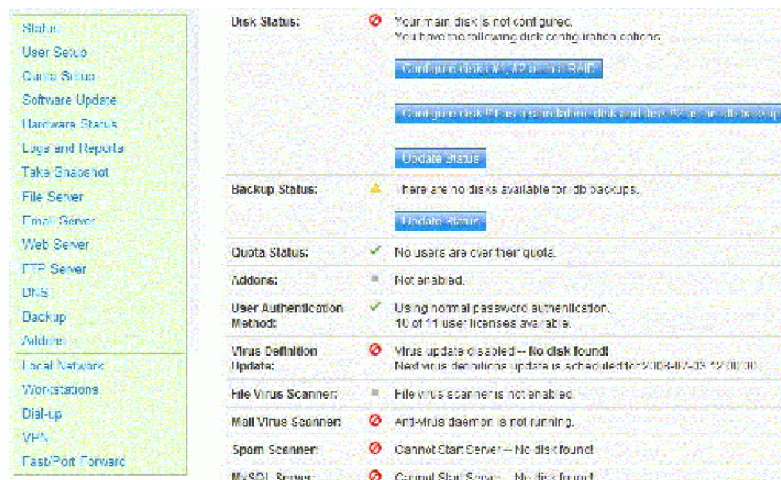


7. Within the Foundations Registration section is a field which enables you to enter an activation key.
8. Enter the activation key and save your changes.

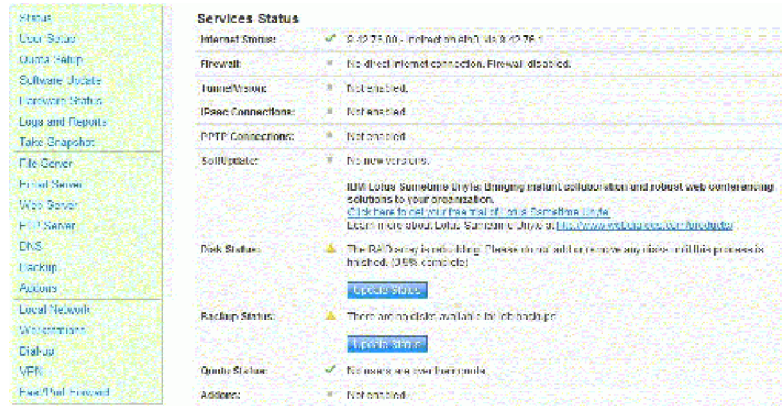
Configuring disks

To configure the disks on a Lotus Foundations Server, perform the following steps:

1. The Disk Status section in the Services Status table on the System Status page in WebConfig has a link that displays that the disks have not been configured. You have two options for disk configuration:
 - RAID (no backup) - configure all disks into a RAID array
 - RAID plus IDB (backup) - configure all except the last disk into a RAID array, configure the last disk as the backup disk.



2. Click the appropriate link to configure the disks.
 - For example, if you have two disks, the Disk Status section displays "The main disk is not configured. You can configure disks #1, #2 all in a RAID or disk #1 as a standalone disk and #2 as an idb backup disk."
 - For a RAID configuration, click All in a RAID. If you want to enable idb backup, click "Disk #2 as an idb backup disk".
 - If you select a RAID configuration, then the RAID array begins to rebuild. This process does not noticeably affect the performance of Lotus Foundations.



Note: If you have three disks, the Disk Status section displays "The main disk is not configured. You can configure disks #1, #2, #3 all in a RAID or disk #1.#2 in a RAID and disk #3 as an idb backup disk." A Lotus Foundations Server could have up to 6 drives, and a third party could potentially have more.

For more information on disk configuration, refer to the Lotus Foundations Start Users Guide.

Reboot

Once the disks have been configured, you need to perform the following steps:

1. Shut down the server.
2. Power the server back on and immediately remove the CD, prior to Lotus Foundations restarting.

The server should now boot directly from the configured disks.

Lotus Foundations Start module installation

Lotus Foundations Start provides the Lotus Domino email and collaboration feature. Lotus Foundations provides security, data backup, remote connectivity, and disaster recovery.

With the Lotus Foundations Server running and configured:

1. If you have a CD, insert the CD labeled Lotus Foundations Start Disk 2 into the server.
2. If you downloaded the software to your workstation, do the following tasks:
 - Connect to the autoinstall file share on the Lotus Foundations Server. To do this, click Start > Run, and then enter the server's IP address followed by \autoinstall. For example, \\192.168.0.1\autoinstall.
 - Observe the dialog box and enter the administrative account and password.
 - Locate the folder where you unzipped the Lotus Foundations Start Domino package. The naming convention is lfstart-domino801-nnnn.pkg. (example: lfstart-domino801-2760.pkg)

- Drag the Domino lfstart-domino801-nnnn.pkg into the autoinstall folder. Wait for the files to be copied to the server autoinstall folder before you proceed.
3. At the WebConfig URL for your server, (https://DOMAIN_NAME:8043), select the Software Update menu option from the left navigation. A list of installable packages is displayed. If there is no list of available packages, wait several seconds and refresh the screen again. The Lotus Foundations Start package should be listed and should be displayed as: Team autoinstall/lfstart-domino-nnnn.pkg: Lotus Foundations Start 1.0.0
 4. Click Install on the Lotus Foundations Start add-on, read and accept the license agreements. The installation begins immediately, but the entire install process may take up to 30 minutes.
 5. Click on the Status menu from the left navigator and scroll to the add-ons section. A green check mark is displayed to the left of the product after installation, verification that Lotus Foundations Start has installed successfully. The product automatically runs. There is no need to turn it on.

User account creation for Lotus Foundations Start

After installing Lotus Foundations Start, the next step is creating user accounts. These provide access to Lotus Domino email and business applications, including Lotus Notes, Domino Web Access (DWA), and Domino Access for Microsoft Outlook (DAMO).

Creating a user account

To create a user account in Lotus Foundations, perform the following steps:

1. Select User Setup from the menu on the left side of any WebConfig screen.
2. Click Add New User.
3. Enter the ID that serves as the user's login and personal directory name. User IDs cannot contain spaces or any punctuation other than hyphens, periods, or underscores. For example, jane-doe, jane.doe, and jane_doe are all acceptable user IDs. With Lotus Foundations Start installed, this user ID becomes part of the user's email address. For example, if the user ID janedoe is created on a Lotus Foundations Server that resides in the mycompany.com domain, Jane's email address is janedoe@mycompany.com. A user ID in Lotus Foundations Start cannot be modified, so be sure that the ID is spelled correctly.
4. Enter the full name of the user. This full name must be unique for each user. It must be in the form *first middle last*, for example *John Paul Doe*. Never use special characters in user names, especially, the at sign (@).
5. Enter a password for the user.
6. Re-enter the password for the user to ensure that it was entered correctly. If the passwords do not match, you are asked to reenter the password in both fields.

Create User

User ID:	<input type="text" value="janedoe"/>
Full Name:	<input type="text" value="Jane Mary Doe"/>
Password:	<input type="password" value="••••••••"/>
Re-enter Password:	<input type="password" value="••••••••"/>
Preferred Language:	<input type="text" value="English"/> ▼
Administrator Access:	<input type="radio"/> Yes <input checked="" type="radio"/> No
Allow FTP Access:	<input type="radio"/> Yes <input checked="" type="radio"/> No
Allow VPN (PPTP) Access:	<input checked="" type="radio"/> Yes <input type="radio"/> No
Quota Value:	<input type="text" value="Unlimited"/> ▼
Join Teams:	<input type="text" value="autoinstall"/> <input type="text" value="backup"/> <input type="text" value="daemon"/> <input type="button" value="Join >>"/>

7. Click Save Changes. You are returned to the main User Setup page, and the user is displayed in the list.

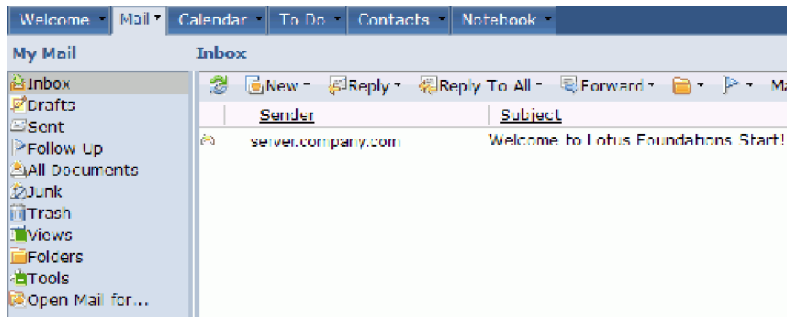
Note: it takes a few minutes for Lotus Foundations Start to initialize the new user in Domino. You can refer to the Addons section in the System Status page for feedback.

Accessing email through a Web browser

When user accounts have been created, the users can log into Domino Web Access by entering the following URL into a Web browser:

(http://DOMAIN_NAME/email)

A DWA login page is displayed, where you provide a user ID and password. DWA automatically redirects you to the corresponding mail (.nsf) file for that user.



Lotus Foundations Start DAMO Addon

One-Click IBM Domino for Microsoft Outlook (DAMO) Installation

The one-click DAMO installation allows for users to install the DAMO plug-in onto their workstation, in a single click. The administrator must first install an add-on module on IBM Lotus Foundations Start, which will allow the DAMO settings to automatically be configured based on the Lotus Foundations Start server configurations.

Domino Access for Microsoft Outlook is a method of accessing your Domino-based email and collaboration materials through Microsoft Outlook. Using this client provides you with full email, collaboration and calendaring support, but it does not provide you with access to other Domino applications, such as team rooms, and other business tools.

Installing the IBM Lotus Foundations Start - DAMO feature to the server

To setup the one-click DAMO installation on the Lotus Foundations Start server:

1. Download the one-click install software, which can be found on the partner website.
2. Within the file that is downloaded, locate and extract the folder labeled: `lfstart-damo-xxxx.pkg` or `lfstartentry-damo-xxx.pkg`
3. Connect to the autoinstall file share on the Lotus Foundations server. To do this, click Start > Run, and then enter the server's IP address followed by `\autoinstall`. For example, `\\192.168.0.1\autoinstall`.
4. Log in using the administrative account credentials you created on Lotus Foundations.
5. Paste the `.pkg` directory into `autoinstall`.
6. Wait for all files to copy from the CD.
7. Go to the Lotus Foundations WebConfig screen and reload the status page.
8. Select Software Update from the menu on the left side of the WebConfig screen.
9. A list of installable packages is displayed, with only one package available. If there is no list of available packages, wait several seconds and refresh the

screen again. The DAMO addon package should be listed and should be displayed as: Team autoinstall/lfstart-DAMO-nnnn.pkg: DAMO for Lotus Foundations Start.

10. Click Install.
11. Accept licenses.
12. Verify the setup is complete on the main status page in the Addons section.

One-click installation and configuration of Domino Access for Microsoft Outlook to the workstation

Before installing Domino Access for Microsoft Outlook, ensure that all instances of Microsoft Outlook on the workstation are closed and that you are logged into the workstation using an account that has authorization to install software.

Use the DAMO_SETUP.bat file to install Domino Access for Microsoft Outlook. This file is located in the user folder on Lotus Foundations.

To install Domino Access for Microsoft Outlook, perform the following steps:

1. Connect to Lotus Foundations using Windows file sharing. For example, if the server IP address of the Lotus Foundations server is 192.168.0.1, select Start > Run, and type \\192.168.0.1\USERNAME where USERNAME corresponds to the user that you want to configure on the Lotus Foundations server.
2. Navigate to the LotusFoundations directory and double-click the DAMO_SETUP.BAT file, then select "Run" when prompted.
3. The silent installation starts. A comment stating that "UNC paths are not supported. Defaulting to the Windows directory." is displayed. This comment is expected and can safely be ignored. The installation program continues.
4. The installation should take approximately five minutes for a workstation that is on the same local network as the Lotus Foundations server. When the installation has completed, a message stating that "DAMO setup for USERNAME completed.". Press any key to continue. The program closes.
5. Open Microsoft Outlook from either a desktop icon or the Start menu.
6. The first time you open Microsoft Outlook after running the DAMO setup, you are greeted with a Choose Profile window. Select the appropriate profile and click OK.
7. Enter the Domino password and click OK.
8. DAMO performs an initial setup that can take several minutes. When the initial setup is complete, Microsoft Outlook opens and the DAMO installation is complete.

Uninstalling the DAMO Addon

You can uninstall an addon by using the uninstall link located in the Software Update/Installed Addon Packages section for the addon. With some addons, the uninstall link is not available.

Before you uninstall an addon, read the documentation of the addon to determine if there are any steps that you must take to preserve associated user data.

Client program installation for Lotus Foundations Start

After Lotus Foundations Start installation and user account creation, you can use the Domino Web Access for email for all users. You can also install a workstation client program to interact with the Domino mail server.

The IBM Lotus Notes client is the recommended way for making the most efficient use of the Lotus Foundations Start platform. The IBM Lotus Notes client provides mechanisms for email, collaboration, shared calendaring, and access to other Domino applications.

IBM Lotus Foundations Start Lotus Notes addon

The Lotus Notes Addon enables you to easily deploy the Lotus Notes workstation clients to your end users. This is a two part process.

1. Install the Lotus Foundations Start Lotus Notes addon feature to the server.
2. Install the Lotus Notes clients to the workstations.

Part 1: Installing the IBM Lotus Foundations Start Lotus Notes addon feature to the server

Lotus Notes is a client that accesses mail from the server, Lotus Domino. The first part of this installation is installing the server addon package on the Lotus Foundations Server. To install the server addon package on the Lotus Foundations Server, perform the following steps:

With the Lotus Foundations Server running and configured:

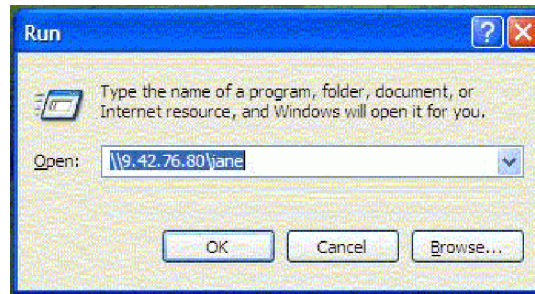
1. If you have a CD, insert the CD labeled Lotus Foundations Start Disk 3 into the server.
2. If you downloaded the software to your workstation, do the following:
 - Connect to the autoinstall file share on the Lotus Foundations Server. To do this, click **Start > Run**, and then enter the server's IP address followed by `\autoinstall`. For example, `\\192.168.0.1\autoinstall`.
 - Observe the dialog box and enter the administrative account and password.
 - Locate the folder where you unzipped the Lotus Foundations Start Notes package. The naming convention is `lfstart-notes801-nnnn.pkg`. (example: `lfstart-notes801-2760.pkg`)
 - Drag the Lotus Notes file `lfstart-notes801-nnnn.pkg` into the autoinstall folder. Wait to proceed until all of the files are copied to the server autoinstall directory.
3. Select Software Update from the menu on the left side of the WebConfig screen.
4. A list of installable packages is displayed. If there is no list of available packages, wait several seconds and refresh the screen again. The Lotus Notes addon package should be listed and should be displayed as: Team autoinstall/lfstart-notes801-nnnn.pkg: Notes 8.0.1 for Lotus Foundations Start.
5. Click Install on the Lotus Foundations Start Notes addon, read and accept the license agreements. The installation begins immediately, and might take a few moments.
6. Verify the setup is complete on the main status page in the Addons section.

Part 2: Install the Lotus Notes clients to the workstations

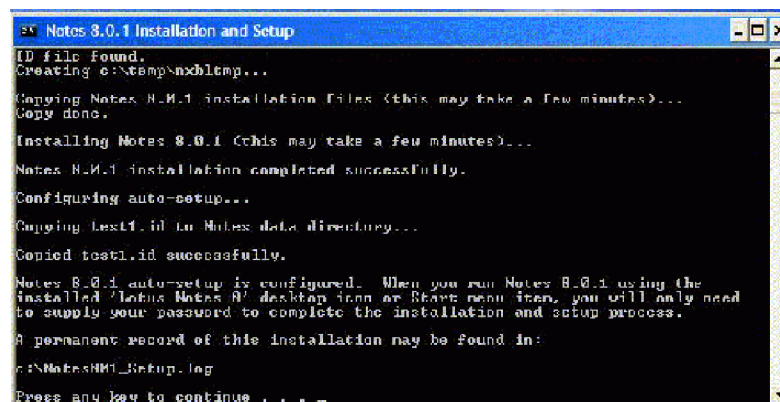
The following instructions explain how to install IBM Lotus Notes onto a workstation. These instructions are for the one-click installation and configuration of Lotus Notes.

To install Lotus Notes on the client workstations, perform the following steps:

1. From the user's workstation, connect to the user's file share on the Lotus Foundations Server. To do this, click Start > Run, and then enter the server's IP address followed by \USERNAME. For example, type \\192.168.0.1\USERNAME where USERNAME corresponds to the user that you want to configure on the Lotus Foundations Server.



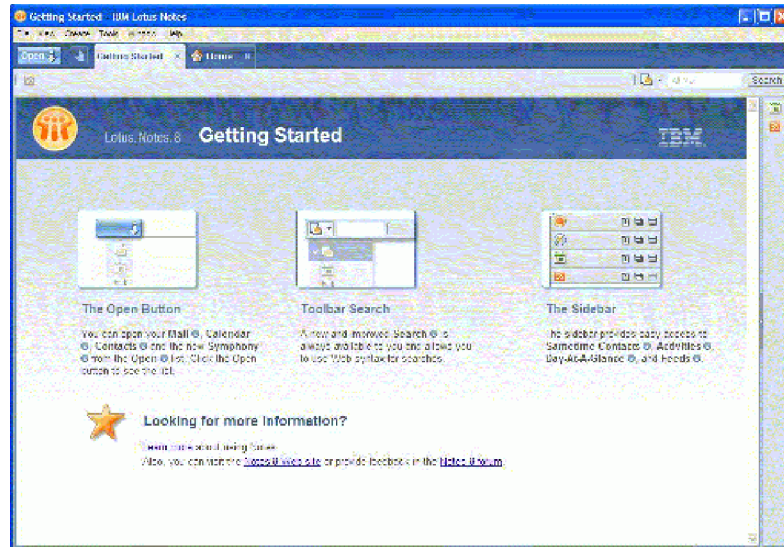
2. Navigate to the LotusFoundations folder and double-click the NOTES801_SETUP.BAT file, then select "Run" when prompted.
3. The auto-deployment installation starts. A comment stating that "UNC paths are not supported. Defaulting to the Windows folder." is displayed. This comment is expected and can safely be ignored. The installation program continues.
4. Press "enter" to continue when prompted.
5. The installation should take approximately five to ten minutes for a workstation that is on the same local network as the Lotus Foundations Server. When the installation has completed, a message stating that "Notes 8.0.1 auto setup is configured...Press any key to continue...". Press "enter" and the program closes.



Note:

If the preferred language of the user is not English and you have installed the corresponding language pack for Notes on the server, the installation of the language pack occurs automatically after the basic Notes installation completes.

6. Open Lotus Notes from either a desktop icon or the Start menu.
7. Enter the Notes password and click **OK**.
8. Notes performs an initial setup that can take several minutes. When the initial setup is complete, Lotus Notes opens and the installation is complete.



Installing language packs for Lotus Notes to the client workstation:

- The one-click installation process automatically installs the language pack when the user installs Lotus Notes.

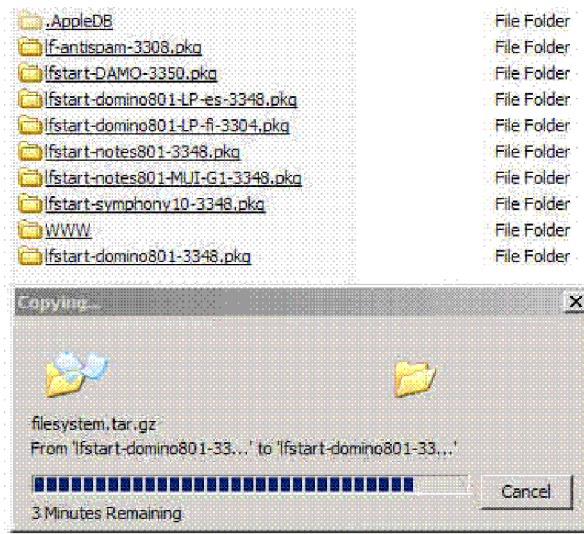
Installing language packs

The base server is now set up, but if you want to setup the server and user support for other languages, you need to install language packs for both Domino and Notes.

Installing language packs for the Lotus Foundations Start - Domino addon

1. If you have a CD, insert the CD labeled Lotus Foundations Start Domino Language Pack for the language you want into the server.
2. If you downloaded the software to your workstation, do the following tasks:
 - Connect to the autoinstall file share on the Lotus Foundations Server. To do this, click Start > Run, and then enter the server's IP address followed by \autoinstall. For example, \\192.168.0.1\autoinstall.
 - Observe the dialog box and enter the administrative account and password.
 - Locate the folder where you unzipped the Lotus Foundations Start software packages. The naming convention is lfstart-domino801-LP-<language code>.nnnn.pkg, where <language_code> is a two character code for the language. (example: lfstart-domino801-LP-fr.2760.pkg for French)

- Drag the Domino Ifstart-domino801-LP-<language code>.nnnn.pkg into the autoinstall folder. Wait to proceed until all of the files are copied to the server autoinstall directory.



3. Select Software Update from the menu on the left side of the WebConfig screen.
4. A list of installable packages is displayed. If there is no list of available packages, wait several seconds and refresh the screen again. The Lotus Domino language pack should be listed and should be displayed as: Team autoinstall/Ifstart-domino801-LP-cc-nnnn.pkg: Domino Language Pack Installer for <language>
5. Click Install on the Lotus Foundations Start Domino language pack, read and accept the license agreements. The installation begins immediately, and may take a few moments .
6. Verify the setup is complete on the main status page in the Addons section.

Note: You can add language packs at any later time also.

Installing language packs for the Lotus Foundations Start - Notes addon

The languages for the Lotus Foundations Start - Notes addon are provided in language pack groups. Before you start the install process, determine which language pack groups you need.

- Group 1 (G1) refers to Simplified Chinese, Traditional Chinese, French, German, Italian, Japanese, Korean, Portuguese (Brazilian), and Spanish.
- Group 2 (G2a) refers to Danish, Dutch, Finnish, Norwegian, and Swedish.

Begin the language pack group install:

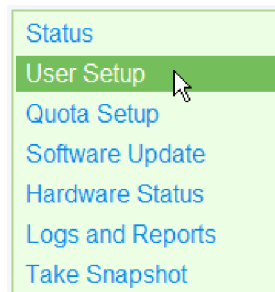
1. If you have a CD, insert the CD labeled Lotus Foundations Start Notes Language Pack for the language group you want into the server.
2. If you downloaded the software to your workstation, do the following:
 - Connect to the autoinstall file share on the Lotus Foundations Server. To do this, click Start > Run, and then enter the server's IP address followed by \autoinstall. For example, \\192.168.0.1\autoinstall.

- Observe the dialog box and enter the administrative account and password.
 - Locate the folder where you unzipped the Lotus Foundations Start Notes package. The naming convention is lfstart-notes801-MUI-Gxx.nnnn.pkg, where Gxx refers to the language pack group. (example: lfstart-notes801-MUI-G1.2760.pkg for the group 1 languages)
 - Drag the Domino lfstart-notes801-MUI-Gxx.nnnn.pkg into the autoinstall folder. Wait to proceed until all of the files are copied to the server autoinstall directory.
3. Select Software Update from the menu on the left side of the WebConfig screen.
 4. A list of installable packages is displayed. If there is no list of available packages, wait several seconds and refresh the screen again. The Lotus Notes language pack should be listed and should be displayed as: Team autoinstall/lfstart-notes801-MUI-Gxx-nnnn.pkg: Lotus Notes 8.0.1 MUI Pack for Gxx
 5. Click Install on the Lotus Foundations Start Notes language pack, read and accept the license agreements. The installation begins immediately, and might take a few moments.
 6. Verify the setup is complete on the main status page in the Addons section.

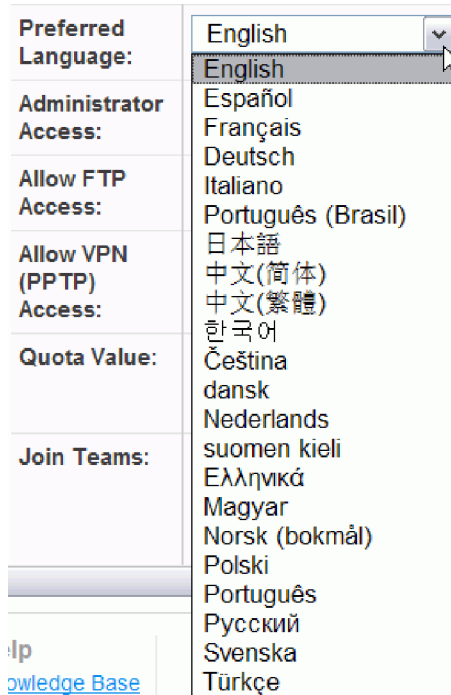
Note: You can add language packs at any later time also.

Change user primary language setting

1. Select User Setup from the menu on the left side of the WebConfig screen.



2. Locate the user that you want change, and click on the [EDIT] button for the user.
3. On the Change User screen, locate the Preferred Language pulldown and select the language for the user.



4. When you set the preferred language of the user, Lotus Foundations Start will automatically update any one-click installers in the home directory of the user to appear in that language. If you have installed the appropriate Notes language pack, the Notes installer will automatically install Notes in the preferred language of the user.

Note: You can change the preferred language of the user at a later time, if necessary.

Additional features you can install

Lotus Foundations Start has additional features for using Microsoft Outlook, anti-spam network scanning, print serving, and Lotus Symphony. The following references will guide you through the setup and configuration of these features:

- Domino Access for Microsoft Outlook: Installing Domino for Microsoft Access (DAMO) to user workstations is optional. However this will provide the ability to correspond with Microsoft Outlook clients. You will need to install the DAMO package. This client may be used for email and calendaring. The DAMO package is available as an electronic download. (<http://kb.nitix.com/6105>)
- Anti-Spam Network Filtering: (<http://kb.nitix.com/6020>)
- Lotus Symphony (<http://kb.nitix.com/6128>)

Copyright

(c) Copyright IBM Corporation 1997, 2008. All Rights Reserved. Licensed Materials - Property of IBM. IBM, the IBM logo, and ibm.com are trademarks or registered trademarks of International Business Machines Corporation, in the United States, other countries, or both. A complete and current list of other IBM trademarks is

available on the Web at www.ibm.com/legal/copytrade.shtml. Java and all Java-based trademarks are trademarks of Sun Microsystems Corp. in the United States, other countries, or both. Linux is a registered trademark of Linus Torvalds in the United States, other countries, or both. Microsoft and Windows are trademarks of Microsoft Corporation in the United States, other countries, or both. Other product or service names may be trademarks or service marks of others.

DOCUMENT PART NUMBER: 602-0013-01



Printed in USA