

Migration Guide: version 1.0.x to version 1.1

Note

Before using this information and the product it supports, read the information in "Notices" on page 21.

This edition applies to version 1.1, release 1 of IBM® Lotus® Foundations (product number 5724-V16) and to all subsequent releases and modifications until otherwise indicated in new editions.

© Copyright International Business Machines Corporation 2009.

US Government Users Restricted Rights – Use, duplication or disclosure restricted by GSA ADP Schedule Contract with IBM Corp.

Contents

Chapter 1. What's new in this release?	1	Chapter 7. Migrating the Lotus Notes client	13
Chapter 2. Introduction	3	Chapter 8. Migrating the Lotus Foundations Start Domino for Microsoft Outlook (DAMO) add-on	17
Chapter 3. Migration path	5	Chapter 9. Migrating the Lotus Symphony add-on	19
Chapter 4. Migrating the Lotus Foundations operating system	7	Notices	21
Chapter 5. Migrating Lotus Foundations Start	9	Trademarks	22
Chapter 6. Install new language packs for Lotus Domino	11		

Chapter 1. What's new in this release?

The following information describes new features for this release of Lotus Foundations Start.

Lotus Foundations Run

The Lotus Foundations Run feature provides support for running additional types of applications. Lotus Foundations Run includes support for VMware Server 2 so that customers can protect their existing appliance investment with an experience that is superior to running applications on their native operating environment. Customers will benefit from the stability of a Linux-based system while enjoying the ability to support the wide array of applications irrespective of operating system.

Separately available at no charge to business partners is the VMware Server 2 Add-on for IBM Lotus Foundations Run which includes a one-click installation of VMware Server 2 for Lotus Foundations.

Lotus Foundations scalable services

Many enterprises have small teams in remote offices and don't have the same IT resources to manage those environments. These remote offices still require comprehensive infrastructure and collaboration solutions to stay connected to the central office, and more importantly, cost effective solutions so they can stay in business. IBM Lotus Foundations scalable services provides support for distributed deployment of Lotus Foundations Start.

Scalable services introduce the ability for multiple Lotus Foundations servers to span across the organization both logically and geographically in order to meet the varying needs of the different segments of the business. They do this by introducing a centralized hierarchical management of the Lotus Foundations servers to provide the overall ease of deployment and administration.

Intelligent disk backup (idb) enhancements

Enhanced idb features include:

- Multi-job support
- Quotas on jobs
- Local encrypted jobs
- Weekly/Monthly backup frequencies
- Data retention (i.e., ability to set threshold for data retention)
- Enhanced user interface
- Ability to suspend jobs

New versions of software

- Lotus Domino 8.5
- Lotus Notes 8.5
- Lotus Domino Access for Microsoft Outlook (DAMO) 8.0.2
- Lotus Symphony 1.2

User interface enhancements

New user interface enhancements include:

- A new backup page with localization of dates/numbers
- A new tabbed layout providing easier navigation

- Login error messages are now larger and appear in red

Additional languages supported

- Russian
- Polish
- Greek
- Czechoslovakian
- Hungarian
- Portuguese
- Turkish

Chapter 2. Introduction

Welcome to the *Lotus Foundations Start Migration Guide: version 1.0.x to version 1.1.*

Before you start the migration, refer to <http://kb.nitix.com/6372> for any updates.

Chapter 3. Migration path

A complete migration path consists of these stages:

- Chapter 4, “Migrating the Lotus Foundations operating system,” on page 7
- Chapter 5, “Migrating Lotus Foundations Start,” on page 9
- *Optional:* Chapter 6, “Install new language packs for Lotus Domino,” on page 11
- Migrating other add-ons:
 - Lotus Notes
 - Lotus Domino for Microsoft Outlook (DAMO)
 - Lotus Symphony

Chapter 4. Migrating the Lotus Foundations operating system

The first step in migration is updating the Lotus Foundations operating system from version 1.0.x to version 1.1.

Prerequisites

Before you begin the migration, ensure you have a current license key.

Migration steps

The migration is done from the Lotus Foundations WebConfig console. Follow these steps:

1. At the WebConfig URL for the server (https://server_ip_address:8043) on the Status page, in the **SoftUpdate** section, you should see a message stating a new version of Lotus Foundations is available.



Figure 1. Status screen displaying new version available

2. Click **Software Update** from the left-side menu.

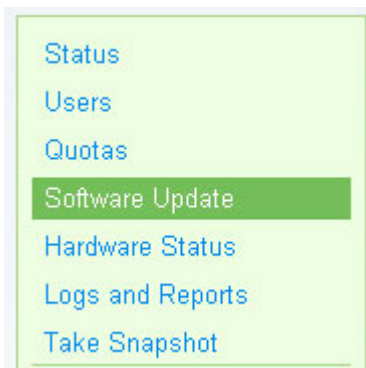


Figure 2. Software Update menu selection in the WebConfig console

3. In the **Foundations Versions available for download** section, Version 1.1 should be listed. Click **Install** next to Version 1.1; read and accept the license agreements. The installation begins immediately.
4. The **SoftUpdate** section in the Status screen monitors the download and installation progress. After the installation is complete, the **SoftUpdate** section displays a warning icon with a message stating: A software update has been installed. To activate it, you must Reboot the server. Or, you can Cancel the upgrade.

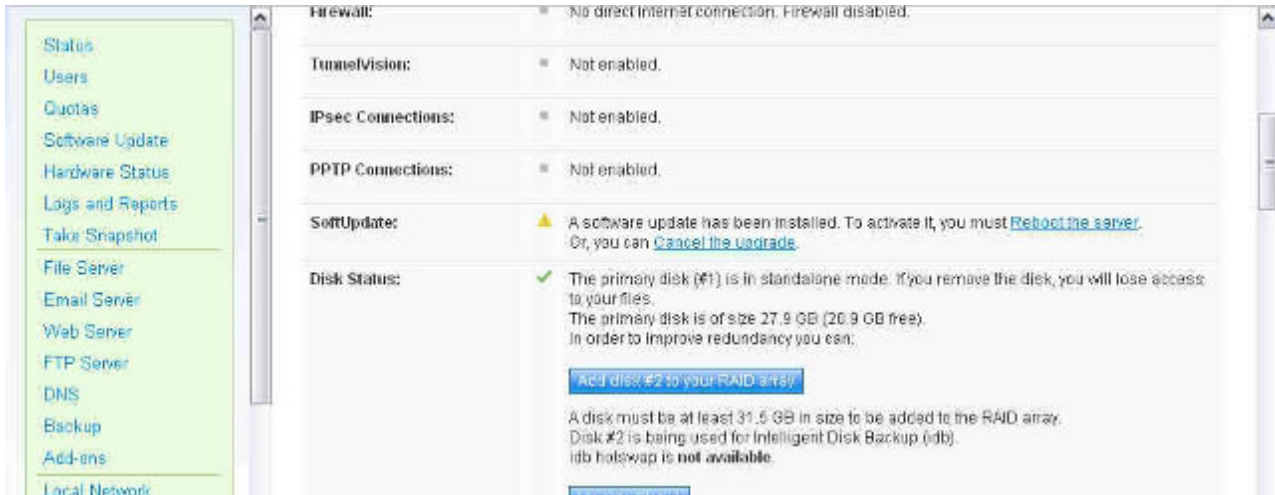


Figure 3. Installation complete message

Select to **Reboot the server**.

Note: If you plan on immediately upgrading the Lotus Foundations Start add-on, before rebooting, you can disable the current version of Lotus Foundations Start. This saves you from having to do another reboot. See Chapter 5, “Migrating Lotus Foundations Start,” on page 9 for directions.

5. After the server has completed rebooting, the version is in testing mode. To take it out of testing mode, you must manually accept the version. While in testing mode, in the **SoftUpdate** section in the Status screen, there is a warning icon with a message stating: Testing version 1.1. Keep it?. Select **Yes** to keep the version. Selecting **No** takes the operating system back to the previous version.

Note: If Lotus Foundations is not installed properly, the server uses the old version when it reboots. If the server encounters any difficulty starting the new operating system, the previous version starts instead. If you choose not to confirm your download, and a power loss or reboot occurs, the server reverts back to the last used operating system.

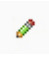
Chapter 5. Migrating Lotus Foundations Start

Before you begin

One way to get the new version of Lotus Foundations Start is through passport advantage (for direct IBM customers) at <http://www.ibm.com/software/passportadvantage>. From the IBM Passport Advantage page choose **Customer Sign** in from the right hand navigator. For Net Integration Partners, go to <http://download.lotusfoundations.com/partner/START/>.

Disable Lotus Foundations Start version 1.0

Before you install Lotus Foundations Start 1.1, it is recommended you disable Lotus Foundations Start 1.0 and reboot the server. To do this, follow these steps:

1. At the WebConfig URL for the server (https://server_ip_address:8043), select **Add-ons** from the menu on the left.
2. In the **Lotus Foundations Start 1.0** row, select the edit icon . In the **Addon Automatic Start** row, click the **Disable** radio button.
3. Click **Save Changes**.
4. Click **Status** from the menu on the left. Scroll to the bottom of the page and select **Reboot**. After the server has finished rebooting, continue to the next section.

Migration steps

Follow these steps to migrate Lotus Foundations Start to version 1.1:

1. If you have a DVD, insert the DVD labeled **Lotus Foundations Start, Disk 2** into the server.
If you downloaded the software to a workstation, follow these steps:
 - a. Connect to the **autoinstall** file share on the Lotus Foundations server. To do this, from the workstation, click **Start** → **Run** and then enter '\\\' followed by the server's IP address, followed by `\autoinstall`. For example, `\\192.168.0.1\autoinstall`.
Note: This does not work if Windows File Sharing is disabled. If you are using Windows Vista, you must enter the information in the text bar in the start menu.
 - b. Enter the administrative account and password.
 - c. Locate the folder where you unzipped the Lotus Foundations Start Lotus Domino package. The naming convention is `lfstart-domino850-nnnn.pkg`. (for example, `lfstart-domino850-2760.pkg`)
 - d. Drag the Domino `lfstart-domino850-nnnn.pkg` into the **autoinstall** folder. Wait for the files to be copied to the server **autoinstall** folder before you proceed.
2. At the WebConfig URL for the server (https://server_ip_address:8043), select **Software Update** from the menu on the left. In the "Add-on packages available for install" section, a list of installable packages is displayed. If there is no list of available packages, wait several seconds and refresh the screen again. The Lotus Foundations Start package should be listed and displayed as: "Lotus Foundations Start 1.1 (Team autoinstall/lfstart-domino-850-*nnnn*.pkg)" or "Lotus Foundations Start 1.1 (CD-ROM)."
3. Click **Install** next to the Lotus Foundations Start add-on; read and accept the license agreements. The installation begins immediately, but the entire installation process may take up to 30 minutes.
4. Click **Status** from the menu on the left and scroll to the Add-ons section. A green check mark is displayed to the left of the product after installation that verifies Lotus Foundations Start has installed successfully. The product automatically runs. There is no need to turn it on.

Add-ons:	✓	Lotus Foundations Start 1.1: Running <ul style="list-style-type: none"> • Domino server listening on port 1352. • Awaiting user or config changes. • Domino Database Backups: Last run completed: Feb 16, 2009 1:02:26 AM. • Domino Database Compaction: Last run completed: Feb 15, 2009 9:01:54 PM. • Domino Database Compaction: Will next run: Feb 22, 2009 9:00:00 PM.
-----------------	---	---

Figure 4. Add-on running

Chapter 6. Install new language packs for Lotus Domino

If you need to continue server and user support for other languages, you need to install new language packs for Lotus Domino.

1. If you have a DVD, insert the DVD labeled **Lotus Foundations Start, Disk 3** for the Lotus Domino language packs.
If you downloaded the software to your workstation, do the following tasks:
 - a. Connect to the **autoinstall** file share on the Lotus Foundations server. To do this, on your workstation, click **Start** → **Run** and then enter '\\\' followed by the server's IP address, followed by \autoinstall. For example: \\192.168.0.1\autoinstall
 - b. Enter the administrative account and password.
 - c. Locate the folder where you unzipped the Lotus Foundations Start software packages. The naming convention is lf-domino850-LP-*language code.nnnn.pkg*, where *language_code* is a two character code for the language. (for example, lf-domino850-LP-fr.2760.pkg for French)
 - d. Drag the Domino lf-domino850-LP-*language code.nnnn.pkg* into the **autoinstall** folder. Wait to proceed until all of the files are copied to the server autoinstall directory.
2. At the WebConfig URL for the server (https://server_ip_address:8043), click **Software Update** from the menu on the left side of the WebConfig screen.
3. A list of installable packages is displayed. If there is no list of available packages, wait several seconds and refresh the screen again. The Lotus Domino language pack should be listed and should be displayed as: Domino Language Pack Installer for *language* (Team autoinstall/lf-domino850-LP-cc-*nnnn.pkg*).
4. Click **Install** on the Lotus Foundations Start Domino language pack; read and accept the license agreements. The installation begins immediately and might take a few moments .
5. Verify the setup is complete on the main status page in the Add-ons section.

Note: You can add language packs at any time.

Chapter 7. Migrating the Lotus Notes client

This section addresses migrating the Lotus Notes add-on from version 8.0.1 to version 8.5. The migration occurs in two steps:

1. Install the new Lotus Foundations Start Lotus Notes add-on feature to the server. *Optional:* Install new language packs.
2. Install the new Lotus Notes clients to the workstations.

Part 1: Installing the IBM Lotus Foundations Start Lotus Notes add-on feature to the server

To install the server add-on package on the Lotus Foundations server, follow these steps:

1. If you have a DVD, insert the DVD labeled **Lotus Foundations Start, Disk 2** into the server.
If you downloaded the software to your workstation, do the following:
 - a. Connect to the **autoinstall** file share on the Lotus Foundations server. To do this, from the workstation, click **Start** → **Run** and then enter '\\\' followed by the server's IP address, followed by \autoinstall. For example, \\192.168.0.1\autoinstall.
 - b. Enter the administrative account and password.
 - c. Locate the folder where you unzipped the Lotus Foundations Start Lotus Notes package. The naming convention is lf-notes85-*nnnn*.pkg. (for example, lf-notes85-2760.pkg)
 - d. Drag the Lotus Notes file lf-notes85-*nnnn*.pkg into the **autoinstall** folder. Wait to proceed until all of the files are copied to the server **autoinstall** folder.
2. At the WebConfig URL for the server (https://server_ip_address:8043), click **Software Update** from the menu on the left side of the WebConfig screen.
3. A list of installable packages is displayed. If there is no list of available packages, wait several seconds and refresh the screen again. The Lotus Notes add-on package should be listed and should be displayed as: Lotus Notes 8.5 for Lotus Foundations Start (Team autoinstall/lf-notes85-*nnnn*.pkg).
4. Click **Install** on the Lotus Foundations Start Notes add-on; read and accept the license agreements. The installation begins immediately and might take a few moments.
5. Verify the setup is complete on the main status page in the Add-ons section.

Install Lotus Notes language packs

The languages for the Lotus Foundations Start - Lotus Notes add-on are provided in language pack groups. Before you start the installation process, determine which language pack groups you need.

- G1 refers to Brazilian Portuguese, French, German, Italian, Spanish, Japanese, Korean, Simplified Chinese, Traditional Chinese
- G2a refers to Danish, Dutch, Finnish, Norwegian-Bokmal, Swedish
- G2b refers to Russian, Polish, Greek, Czech, Hungarian, Portuguese, Turkish

Follow these steps for the language pack group installation:

1. If you have a DVD, insert the DVD labeled **Lotus Foundations Start, Disk 2** for the Lotus Notes language packs.
If you downloaded the software to your workstation, do the following:
 - a. Connect to the **autoinstall** file share on the Lotus Foundations server. To do this, from a workstation, click **Start** → **Run** and then enter '\\\' followed by the server's IP address, followed by \autoinstall. For example: \\192.168.0.1\autoinstall
 - b. Enter the administrative account and password.

- c. Locate the folder where you unzipped the Lotus Foundations Start Lotus Notes language package. The naming convention is `If-notes85-MUI-language_pack-nnnn.pkg`, where *language_pack* refers to the language pack group. (for example, `If-notes85-MUI-G1-2760.pkg` for the group 1 languages)
 - d. Copy the Domino `If-notes85-MUI-language_pack-nnnn.pkg` into the **autoinstall** folder. Wait to proceed until all of the files are copied to the server **autoinstall** folder.
2. At the WebConfig URL for the server (`https://server_ip_address:8043`), click **Software Update** from the menu on the left side of the WebConfig screen.
 3. A list of installable packages is displayed. If there is no list of available packages, wait several seconds and refresh the screen again. The Lotus Notes language pack should be listed and should be displayed as: Lotus Notes 8.5 MUI Pack for *language_pack* (Team autoinstall/If-notes85-MUI-*language_pack-nnnn.pkg*)
 4. Click **Install** on the Lotus Foundations Start Notes language pack; read and accept the license agreements. The installation begins immediately and might take a few moments.
 5. Verify the setup is complete on the main status page in the Add-ons section. The Lotus Notes installer automatically installs Lotus Notes in the preferred language of the user.

Note: You can add language packs at any time.

Part 2: Install the Lotus Notes clients to the workstations

Ensure the user has closed the current installation of Lotus Notes.

To install the new version of Lotus Notes on the client workstations, follow these steps:

1. From the user's workstation, connect to the user's file share on the Lotus Foundations server. To do this, click **Start** → **Run** and then enter `'\\'` followed by the server's IP address, followed by `\USERNAME`. For example, type `\\192.168.0.1\USERNAME` where *USERNAME* corresponds to the user that you want to configure on the Lotus Foundations Server.

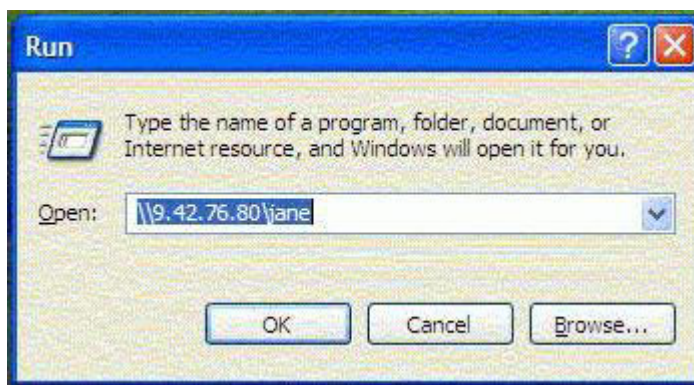


Figure 5. Accessing the user's workstation

2. Navigate to **LotusFoundations** → **NOTES85_INSTALL** folder and double-click the **NOTES85_SETUP.BAT** file, then select **Run** when prompted.

The Notes Installation and Setup screen displays. Press any key to continue.

Note: When the command prompt window opens, a message is displayed that states: UNC paths are not supported. Defaulting to Windows directory. (as shown in the following screen shot). This message can be ignored.

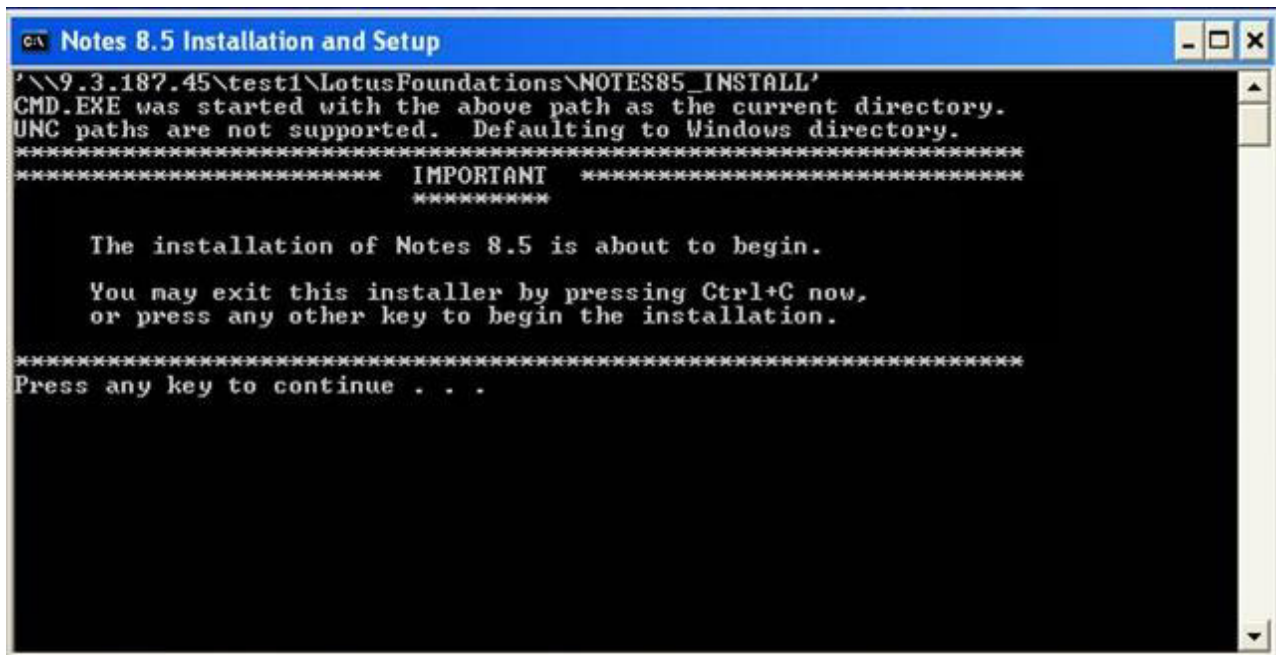


Figure 6. Notes Installation and Setup screen

3. The installation should take approximately five to ten minutes for a workstation that is on the same local network as the Lotus Foundations Server. When the installation is complete, you should see a message stating that the setup is complete. Click **OK**. The Installation and Setup screen appears. Press any key and the program closes.

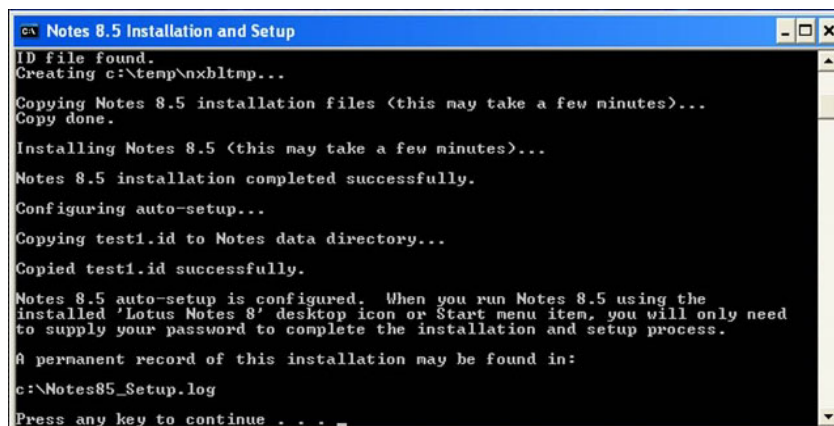


Figure 7. Notes Installation and Setup complete

Note: If the preferred language of the user is not English and you have installed the corresponding language pack for Lotus Notes on the server, the installation of the language pack occurs automatically after the basic Lotus Notes installation completes.

4. Open Lotus Notes from either a desktop icon or the **Start** menu.
5. Enter the Lotus Notes password and click **OK**.
6. Lotus Notes performs a setup that can take several minutes. When the setup is complete, Lotus Notes opens and the migration is complete.

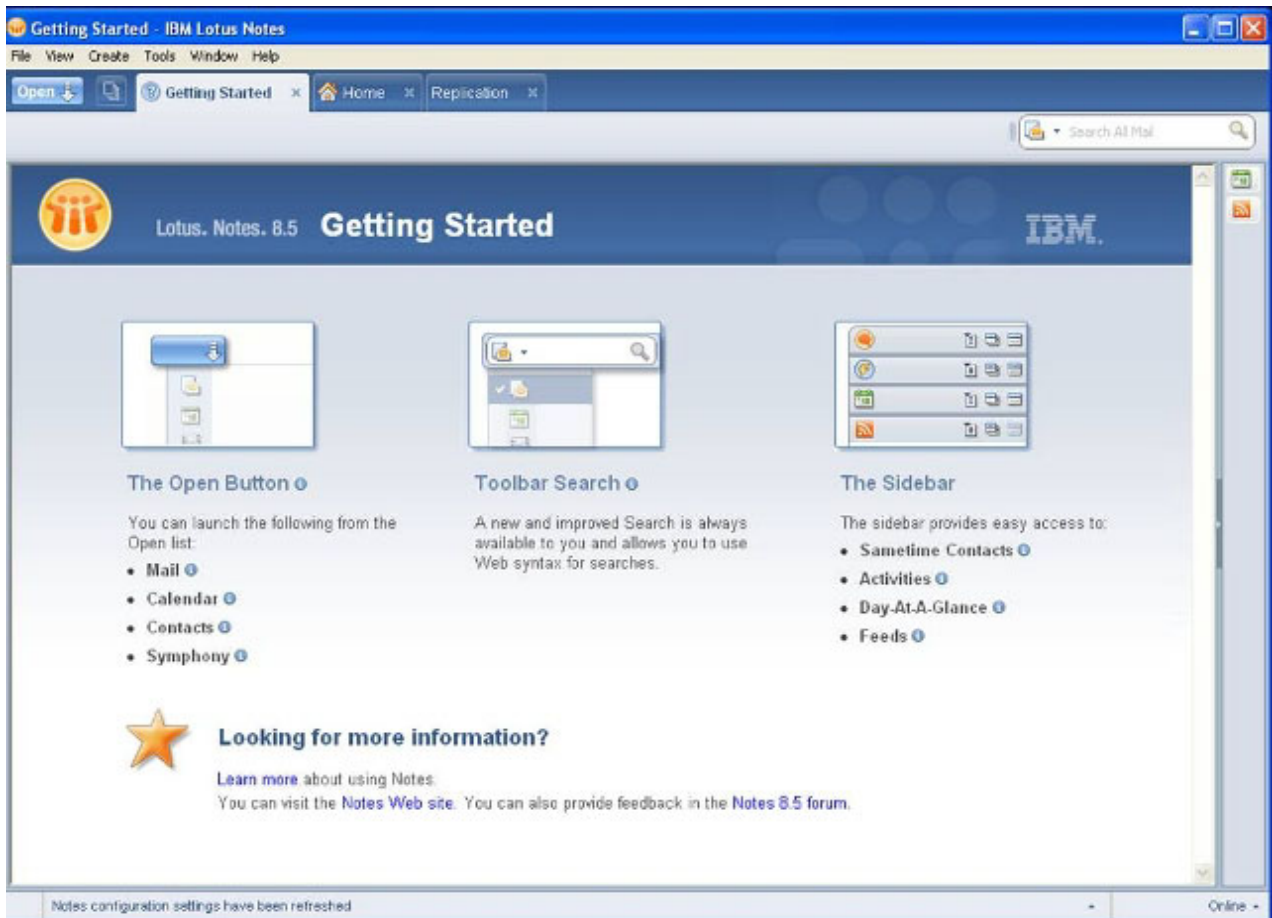


Figure 8. Lotus Notes Welcome screen

Installing language packs for Lotus Notes to the client workstation

The one-click installation process automatically installs the language pack when the user installs Lotus Notes.

Chapter 8. Migrating the Lotus Foundations Start Domino for Microsoft Outlook (DAMO) add-on

This section address migrating to Lotus Foundations Start Domino for Microsoft Outlook (DAMO) version 8.0.2.

One-click Lotus Foundations Start Domino for Microsoft Outlook (DAMO) migration

The administrator must first install the add-on module on IBM Lotus Foundations Start.

Installing the IBM Lotus Foundations Start - DAMO feature to the server

To setup the one-click DAMO installation on the Lotus Foundations Start server:

1. If you have a DVD, insert the DVD labeled **Lotus Foundations Start Disk 2** into the server.
If you downloaded the software to your workstation, do the following:
 - a. Connect to the **autoinstall** file share on the Lotus Foundations server. To do this, from a workstation, click **Start** → **Run** and then enter '\\\' followed by the server's IP address, followed by \autoinstall. For example: \\192.168.0.1\autoinstall
 - b. Enter the administrative account and password.
 - c. Locate the folder where you unzipped the Lotus Foundations Start DAMO package. The naming convention is lf-DAMO802-language_pack-nnnn.pkg (language groups G1, G2a, G2b); for example, lf-DAMO802-G1-2760.pkg.
 - d. Copy the DAMO file lf-DAMO802-language_pack-nnnn.pkg into the **autoinstall** folder. Wait to proceed until all of the files are copied to the server **autoinstall** folder.
2. At the WebConfig URL for the server (https://server_ip_address:8043), click **Software Update** from the menu on the left side of the WebConfig screen.
3. A list of installable packages is displayed. If there is no list of available packages, wait several seconds and refresh the screen again. The DAMO add-on package should be listed and should be displayed as: Lotus Domino Access for Microsoft Outlook 8.0.2 for Gxx languages (Team autoinstall/lf-DAMO802-language_pack-nnnn.pkg).
4. Click **Install** on the DAMO add-on; read and accept the license agreements. The installation begins immediately and might take a few moments.
5. Verify the setup is complete on the main status page in the Add-ons section.

One-click installation of Domino Access for Microsoft Outlook to the workstation

Before installing Domino Access for Microsoft Outlook, ensure that all instances of Microsoft Outlook on the workstation are closed and that you are logged into the workstation using an account that has authorization to install software.

To install the new version of Domino Access for Microsoft Outlook, follow these steps:

1. From the user's workstation, connect to the user's file share on the Lotus Foundations server. To do this, click **Start** → **Run** and then enter '\\\' followed by the server's IP address, followed by \USERNAME. For example, type \\192.168.0.1\USERNAME where USERNAME corresponds to the user that you want to configure on the Lotus Foundations Server.
2. Navigate to **LotusFoundations** → **DAMO802_INSTALL** folder and double-click the DAMO_SETUP.BAT file, then select **Run** when prompted.
The DAMO Installation and Setup screen displays. Press any key to continue.

Note: When the command prompt window opens, a message is displayed that states: UNC paths are not supported. Defaulting to Windows directory. (as shown in the following screen shot). This message can be ignored.

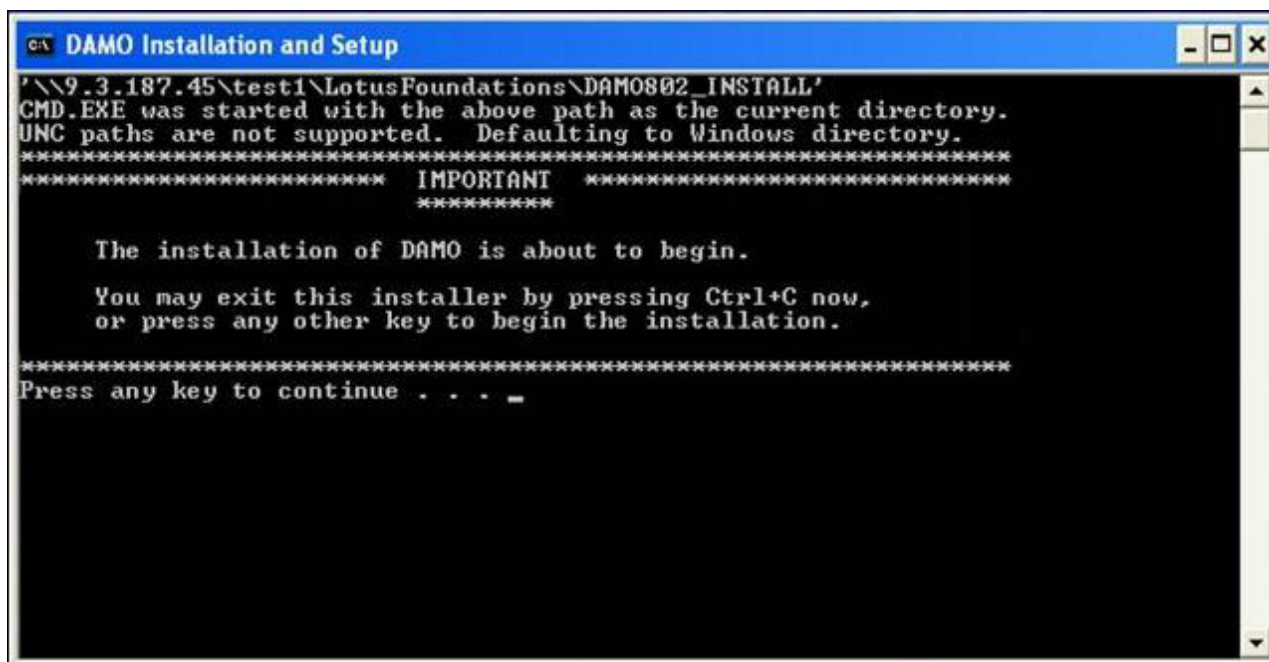


Figure 9. DAMO Installation and Setup screen

3. The installation should take approximately five minutes for a workstation that is on the same local network as the Lotus Foundations server. When the installation has completed, a message stating that "DAMO setup for USERNAME completed." Press any key to continue. The program closes.
4. Open Microsoft Outlook from either a desktop icon or the **Start** menu.
5. Enter the Lotus Domino password and click **OK**.
6. DAMO performs an setup that can take several minutes. When the setup is complete, Microsoft Outlook opens and the DAMO migration is complete.

Chapter 9. Migrating the Lotus Symphony add-on

This section addresses migrating from Lotus Symphony version 1.0 to Lotus Symphony version 1.2.

Migrating the Lotus Symphony add-on to the server

The first part of the installation of the new version of Lotus Symphony installs the server add-on package on the Lotus Foundations server. To install the server add-on package to the Lotus Foundations server, with the Lotus Foundations server running and configured, follow these steps:

1. If you have a DVD, insert the DVD labeled **Lotus Foundations Start, Disk 2** into the server.
If you downloaded the software to your workstation, do the following:
 - Connect to the **autoinstall** file share on the Lotus Foundations server. To do this, from the workstation, click **Start** → **Run**, and then enter '\\\' followed by the server's IP address, followed by \autoinstall. For example, \\192.168.0.1\autoinstall.
 - Enter the administrative account and password.
 - Locate the folder where you unzipped the Lotus Foundations Start Symphony package. The naming convention is lf-symphony12-*nnnn*.pkg. (for example, lf-symphony12-2760.pkg)
 - Place the Lotus Symphony lf-symphony12-*nnnn*.pkg into the **autoinstall** folder. Wait to proceed until all of the files are copied to the server **autoinstall** folder.
2. Select **Software Update** from the menu on the left side of the WebConfig screen.
3. A list of installable packages is displayed. If there is no list of available packages, wait several seconds and refresh the screen again. The Lotus Symphony add-on package should be listed and should be displayed as: Lotus Symphony 1.2 (Team autoinstall/lf-symphony12-*nnnn*.pkg).
4. Click **Install** on the Lotus Foundations Start Lotus Symphony add-on; read and accept the license agreements. The installation begins immediately and might take a few moments.
5. Verify the setup is complete on the main status page in the Add-ons section.

The Lotus Symphony package that is deployed to the Lotus Foundations server includes support for all languages.

Installing Lotus Symphony to client workstations

Before Lotus Symphony is installed on the client, ensure the user has the current installation of Lotus Symphony closed. Follow these steps to install the new version of Lotus Symphony to the client workstation:

1. From the user's workstation, connect to the user's file share on the Lotus Foundations server. To do this, click **Start** → **Run**, and then enter '\\\' followed by the server's IP address, followed by \USERNAME. For example, type \\192.168.0.1\USERNAME where USERNAME corresponds to the user that is installing Lotus Symphony.
2. Navigate to the **LotusFoundations** → **SYMPHONY1_INSTALL** folder and double-click the SYMPHONY1_SETUP.BAT file, then select **Run** when prompted.

The Symphony Installation and Setup screen displays. Press any key to continue.

Note: When the command prompt window opens, a message is displayed that states: UNC paths are not supported. Defaulting to Windows directory. (as shown in the following screen shot). This message can be ignored.

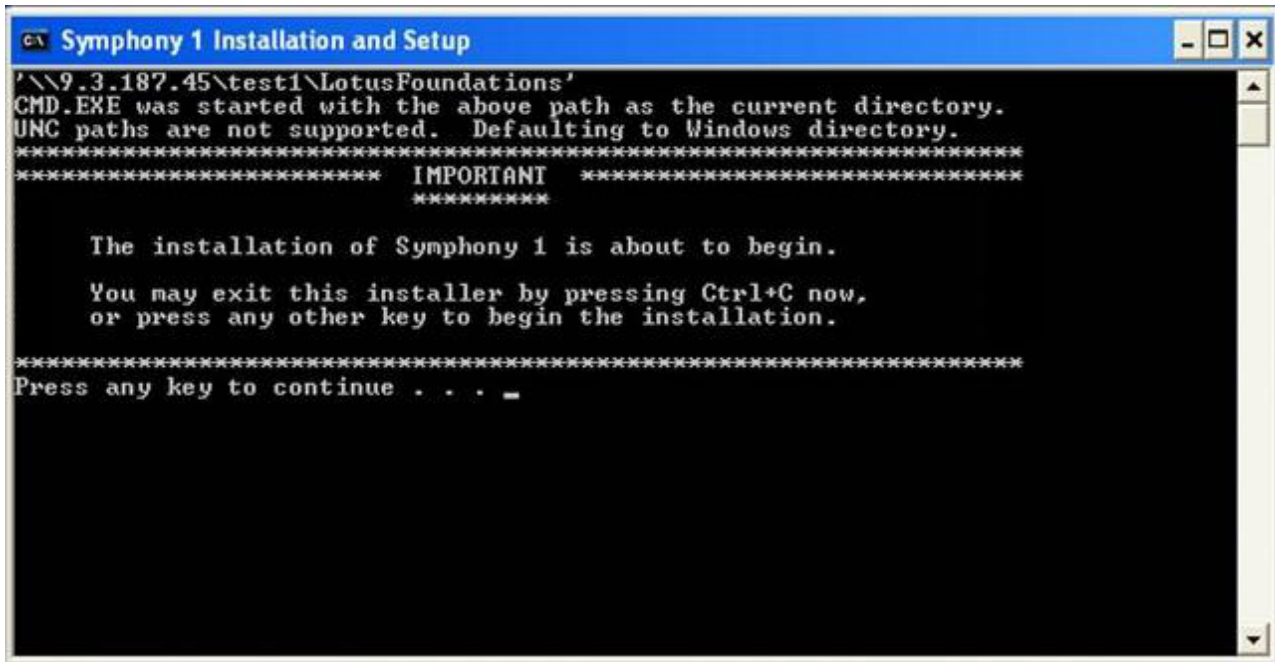


Figure 10. Symphony Installation and Setup screen

3. The installation should take approximately five to ten minutes for a workstation that is on the same local network as the Lotus Foundations server. When the installation has completed, a message stating that "Symphony 1 auto setup is configured...Press any key to continue...". Press any key and the program closes.

You are ready to continue working with IBM Lotus Symphony.

Note: The Lotus Symphony package that is installed from the Lotus Foundations server includes support for all languages and uses the language of the user's workstation.

Notices

This information was developed for products and services offered in the U.S.A.

IBM may not offer the products, services, or features discussed in this document in other countries. Consult your local IBM representative for information on the products and services currently available in your area. Any reference to an IBM product, program, or service is not intended to state or imply that only that IBM product, program, or service may be used. Any functionally equivalent product, program, or service that does not infringe any IBM intellectual property right may be used instead. However, it is the user's responsibility to evaluate and verify the operation of any non-IBM product, program, or service.

IBM may have patents or pending patent applications covering subject matter described in this document. The furnishing of this document does not grant you any license to these patents. You can send license inquiries, in writing, to:

IBM Director of Licensing
IBM Corporation
North Castle Drive
Armonk, NY 10504-1785
U.S.A.

For license inquiries regarding double-byte (DBCS) information, contact the IBM Intellectual Property Department in your country or send inquiries, in writing, to:

IBM World Trade Asia Corporation
Licensing
2-31 Roppongi 3-chome, Minato-ku
Tokyo 106-0032, Japan

The following paragraph does not apply to the United Kingdom or any other country where such provisions are inconsistent with local law: INTERNATIONAL BUSINESS MACHINES CORPORATION PROVIDES THIS PUBLICATION "AS IS" WITHOUT WARRANTY OF ANY KIND, EITHER EXPRESS OR IMPLIED, INCLUDING, BUT NOT LIMITED TO, THE IMPLIED WARRANTIES OF NON-INFRINGEMENT, MERCHANTABILITY OR FITNESS FOR A PARTICULAR PURPOSE. Some states do not allow disclaimer of express or implied warranties in certain transactions, therefore, this statement may not apply to you.

This information could include technical inaccuracies or typographical errors. Changes are periodically made to the information herein; these changes will be incorporated in new editions of the publication. IBM may make improvements and/or changes in the product(s) and/or the program(s) described in this publication at any time without notice.

Any references in this information to non-IBM Web sites are provided for convenience only and do not in any manner serve as an endorsement of those Web sites. The materials at those Web sites are not part of the materials for this IBM product and use of those Web sites is at your own risk.

IBM may use or distribute any of the information you supply in any way it believes appropriate without incurring any obligation to you.

Licensees of this program who wish to have information about it for the purpose of enabling: (i) the exchange of information between independently created programs and other programs (including this one) and (ii) the mutual use of the information which has been exchanged, should contact:

IBM Corporation
Office 4360
One Rogers Street
Cambridge, MA 02142
U.S.A.

Such information may be available, subject to appropriate terms and conditions, including in some cases, payment of a fee.

The licensed program described in this document and all licensed material available for it are provided by IBM under terms of the IBM Customer Agreement, IBM International Program License Agreement or any equivalent agreement between us.

Trademarks

IBM, the IBM logo, ibm.com, Lotus, and Notes are trademarks or registered trademarks of International Business Machines Corporation in the United States, other countries, or both. These and other IBM trademarked terms are marked on their first occurrence in this information with the appropriate symbol (® or ™), indicating US registered or common law trademarks owned by IBM at the time this information was published. Such trademarks may also be registered or common law trademarks in other countries. A current list of IBM trademarks is available on the Web at <http://www.ibm.com/legal/copytrade.shtml>

Java and all Java-based trademarks are trademarks of Sun Microsystems, Inc. in the United States, other countries, or both.

Linux is a registered trademark of Linus Torvalds in the United States, other countries, or both.

Microsoft and Windows are trademarks of Microsoft Corporation in the United States, other countries, or both.

UNIX is a registered trademark of The Open Group in the United States and other countries.

Other company, product, or service names may be trademarks or service marks of others.